



ULM Warhawks Men's Basketball

University of Louisiana at Monroe



ULM (12-7, 6-2 SBC)
WARHAWKS

Vs.

Georgia Southern
EAGLES (12-4, 5-2 SBC)



Game 20

Saturday, Jan. 24, 2015 • 4:00 p.m.

Fant-Ewing Coliseum (7,000) • Monroe, La.

Live Stream: Warhawks All-Access (Online Only)

Radio: KLIP LA 105.3 FM, Nick White (PXP)

Twitter: @ULM_MBB

ULM Quick Notes

- Legendary former head coach Mike Vining will be honored at halftime with the raising of a "402" banner which represents the total number of regular season and postseason victories at ULM over 24 seasons at the helm (see page 5)

- The Warhawks are 8-1 all-time against the Eagles. It's the first meeting between the two teams since Feb. 27, 1982 when ULM came out on top, 85-73. It was ULM's final year in the Atlantic Sun Conference and Vining's first season as head coach. Keith Richard was 7-0 vs. Georgia Southern as a player at ULM

- ULM enters the game with a 0.5 game lead over Georgia Southern for first-place in the Sun Belt Conference standings

- The Warhawks are 8-1 at home this season and 398-169 (.702) all-time in Fant-Ewing Coliseum

- ULM jumped into first-place in the league after six straight SBC victories, the most consecutive in school history. It was also the most wins in-a-row since 1998-99 when it was a member of the Southland Conference

- On the season, the Warhawks enter the game ranking first in the league and ninth in the nation in three-point percentage defense (.374). They are also tops in the SBC and 14th in the country in field goal defense (.274).

- In SBC games only, the Warhawks lead the league in scoring defense (60.0 ppg) and field goal percentage defense (.382). They place second in the conference in three-point percentage defense (.262) and third in blocks (3.8 bpg)

- Senior Tylor Ongwae leads the team in scoring with 13.6 points per game and also grabs 6.6 rebounds per outing. He ranks second in the league in free throw percentage at .857 (60-70)

- In conference games only, senior Marvin Williams is the team leader with 13.8 points and 7.1 rebounds per game. He leads the league in field goal percentage (.692) and is coming off a 6-6 FG outing (17 points) against UT Arlington

ULM MEN'S BASKETBALL SCHEDULE

Sat, Nov. 15	# at UAB	W, 74-65
Mon, Nov. 17	Champion Baptist	W, 106-39
Fri, Nov. 21	# at No. 8 Florida	L, 61-56 (OT)
Wed, Nov. 26	# vs. Coastal Carolina	L, 61-48
Thurs, Nov. 27	# vs. Robert Morris	L, 71-54
Sat, Dec. 6	Louisiana College	W, 83-55
Tues, Dec. 9	Northwestern State	W, 82-74
Sat, Dec. 13	at New Mexico	L, 54-46
Tues, Dec. 16	Central Baptist	W, 78-53
Fri, Dec. 19	LSU-Alexandria	W, 76-71
Sun, Dec. 21	at Samford	L, 64-50
Tues, Dec. 30	at Georgia State*	L, 65-45
Mon, Jan. 5	Arkansas State*	W, 70-61
Thurs, Jan. 8	at UT Arlington*	W, 76-73 (OT)
Sat, Jan. 10	at Texas State*	W, 62-59
Thurs, Jan. 15	Troy*	W, 63-54
Sat, Jan. 17	UALR*	W, 64-52
Mon, Jan. 19	at UL-Lafayette*	W, 57-55
Thurs, Jan. 22	UT Arlington*	L, 61-57
Sat, Jan. 24	Georgia Southern*	4:00 PM
Thurs, Jan. 29	at Troy*	7:30 PM
Sat, Jan. 31	South Alabama*	4:00 PM
Thurs, Feb. 5	at UALR*	7:30 PM
Sat, Feb. 7	at Georgia Southern*	6:30 PM
Thurs, Feb. 12	UL-Lafayette*	7:00 PM
Sat, Feb. 14	Appalachian State*	2:00 PM
Sat, Feb. 21	at Arkansas State*	7:05 PM
Thurs, Feb. 26	at South Alabama*	7:05 PM
Sat, Feb. 28	at Appalachian State*	2:30 PM
Thurs, March 5	Georgia State*	7:00 PM
Sat, March 7	Texas State*	4:00 PM
Thurs, March 12	SBC Championships%	TBA

All times Central and subject to change. **Bold** indicates home game; *-Sun Belt game; %-SBC Tournament; #Battle 4 Atlantis

We are ULM. Please note that there are only two correct versions of our institution's name, the preferred acronym ULM and the full name, the University of Louisiana at Monroe. Any other reference, including Louisiana-Monroe, UL-Monroe, La.-Monroe, LAM, or simply Monroe, are incorrect.

Media Relations Contacts

Robbie Kleinmuntz (Primary)	Michael Garabedian
Assistant Director	Graduate Assistant
kleinmuntz@ulm.edu	garabemc@warhawks.ulm.edu
O: 318-342-5462	O: 318-342-5461
C: 847-912-5380	C: 305-926-8420



ULM Warhawks Men's Basketball

University of Louisiana at Monroe



Keith Richard
Head Coach

Fifth Year at ULM
14th Season Overall

Alma Mater: ULM (1982)

THE RICHARD FILE

COACHING HONORS

- 1999 Sun Belt Coach of the Year
- Has been part of the coaching staff for seven NCAA Tournament and three NIT teams

COACHING CAREER

Season	School	Position	Record
1984-85	ULM	Graduate Assistant	17-12
1985-86	ULM	Graduate Assistant	20-10/NCAA
1986-87	Marshall	Assistant Coach	25-6/NCAA
1987-88	Marshall	Assistant Coach	24-8/NIT
1988-89	Marshall	Assistant Coach	15-15
1989-90	ULM	Assistant Coach	22-8/NCAA
1990-91	ULM	Assistant Coach	25-8/NCAA
1991-92	ULM	Assistant Coach	19-10/NCAA
1992-93	ULM	Assistant Coach	26-5/NCAA
1993-94	ULM	Assistant Coach	19-9
1994-95	La. Tech	Assistant Coach	14-13
1995-96	La. Tech	Associate Head Coach	11-17
1996-97	La. Tech	Associate Head Coach	15-14
1997-98	La. Tech	Associate Head Coach	12-15
1998-99	La. Tech	Head Coach	19-9
1999-00	La. Tech	Head Coach	21-8
2000-01	La. Tech	Head Coach	17-12
2001-02	La. Tech	Head Coach	22-10/NIT
2002-03	La. Tech	Head Coach	12-15
2003-04	La. Tech	Head Coach	15-15
2004-05	La. Tech	Head Coach	14-15
2005-06	La. Tech	Head Coach	20-13/NIT
2006-07	La. Tech	Head Coach	10-20
2008-09	LSU	Assistant Coach	27-8/NCAA
2009-10	LSU	Assistant Coach	11-20
2010-11	ULM	Head Coach	7-24
2011-12	ULM	Head Coach	3-26
2012-13	ULM	Head Coach	4-23
2013-14	ULM	Head Coach	10-17
2014-15	ULM	Head Coach	12-7

PLAYING CAREER

- Played for ULM from 1978-82; Coached by Lenny Fant, Benny Hollis & Mike Vining
- 1979 Atlantic Sun Tournament Champions, NIT
- 1980 Atlantic Sun Regular Season Champions
- 1982 Atlantic Sun Tournament Champions, NCAA
- Two-time team captain ('81 & '82)
- Led team in assists twice

EDUCATION

- Bachelor's degree in general business, ULM (1982)
- Master's degree in guidance counseling, ULM (1986)

ULM Quick Notes Continued...

- With a win, the Warhawks would match their conference win total from last season when they finished 7-11. ULM has already surpassed its overall win total by two games when it ended 10-17

- The Warhawks will play their fifth game in nine days. They just wrapped up a stretch of three games in five days and went undefeated

- ULM is the only team in the SBC that has not allowed 75 points in a single game this season. It is also one of 16 teams left in the nation to accomplish that

- Williams played a huge role in beginning the six-game winning streak for ULM. After the first three victories, he was named Sun Belt Conference Player of the Week and Co-Louisiana Player of the Week on Jan. 12, 2015. Williams shot 26-33 (.798) and averaged 20.7 points over the 3-0 week. He posted a career-high 22 points against Red Wolves and then matched his scoring and rebounding highs with 22 and 13 against the Mavs, respectively

- Sophomore Nick Coppola ranks second in the league in assist:turnover ratio (2.2) and third in assists (4.2 apg). He has played at least 40 minutes six times this year and 15 times in his career. Coppola averages 8.7 points per game on the season

- Junior Majok Deng leads the team in rebounding with 6.9 per game and also scores 9.1 points per outing. He ranks second in the league in blocks (1.7 bpg) and third in defensive rebounds (5.3 drpg). Deng is coming off a 10-point performance against the Mavs

- The Warhawks are 10-0 on the season when they have at least three double-figure scorers and 6-0 when they shoot over 50 percent from the field

- ULM has had five different players tally a double-double and eight different players reach double-figure scoring in a game this season

- ULM's win over UTA in the first meeting improved Keith Richard's overtime record to 18-9 in his head coaching career, which includes nine seasons at Louisiana Tech. The Warhawks came back from a 13-point second half deficit to earn the victory

- Ongwae won Co-Louisiana Player of the Week on Dec. 22, 2014 and Sun Belt Conference Player of the Week on Nov. 18, 2014. He was named to the Preseason All-SBC Second-Team after earning four postseason awards in 2013-14

- The Warhawks have had two different players earn SBC Player of the Week honors in the same season for the first time since joining the league in 2005-06

- ULM closed out non-conference play with a winning record for the first time since 2007-08

- Earlier this season, ULM took eighth-ranked Florida to overtime. Coppola hit a three-pointer with 19 seconds left to level the score at 51. ULM led 54-53 with 3:00 remaining in overtime after a three-point play from Ongwae

- The 61 points allowed versus No. 8 Florida was the lowest ULM has ever let up against a ranked opponent in program history



ULM Warhawks Men's Basketball

University of Louisiana at Monroe



ULM Quick Notes Continued...

- ULM hung around in front of 13,710 fans at The Pit against New Mexico in a closely contested 54-46 decision. ULM went on an 11-0 run in the second half to make it a six-point game with 3:48 remaining

- The Warhawks posted a historic 106-39 victory over Champion Baptist in their home opener. The 67-point win broke the school record for largest margin of victory. It was also the most points ULM scored in a game since Feb. 17, 2001 in a game against UTSA. Additionally, the 67-point victory is the largest of any game in the Sun Belt Conference this season

- The Warhawks followed it up with a 28-point home win over Louisiana College as both Deng and Coppola recorded double-doubles

- ULM has had two players tally double-doubles in the same game twice this season, both at home (against La. College and Northwestern St.)

- Coppola dished out a career-high 12 assists against Louisiana College. Coppola started all 27 games last year at point guard as a true freshman and has started every game of his career

- The Warhawks opened the season with a 74-65 victory on the road over UAB. It was the first opening night victory for ULM since Nov. 14, 2008 when it defeated Morehead State, 56-54 and the first opening night road win since Nov. 23, 1999 when it won at Samford, 67-60. Additionally, it was the largest opening night road victory since Dec. 1, 1979 when it beat Nicholls State, 79-69

- ULM has 15 home games on the 2014-15 schedule, the most since 1985-86

- Keith and Lance Richard have gone up against four other father/son duos this season. The Richard's took on Josiah/Eric Capaci at Champion Baptist, Billy/Billy Donovan at Florida, Cullen/Craig Neal at New Mexico and Ron/R.J. Hunter at Georgia State

- The Warhawks were tabbed for sixth in the Sun Belt Conference Preseason Poll. They return three starters and six players overall on a team that more-than doubled both its overall and conference win totals

- Last season, Williams notched a 19-point performance against No. 5 Kansas and outscored both Andrew Wiggins and Joel Embiid, the first and third picks of the NBA draft

- The Warhawks enter the 2014-15 season without any APR penalties for the first time in five years. ULM head coach Keith Richard has turned the program around academically since inheriting APR sanctions when he took over at the helm, and the Warhawks have won back-to-back Sun Belt Conference academic awards

- For the first time since the NCAA instituted academic progress rate (APR) scores in 2003-04, the ULM men's basketball program tallied a perfect 1,000 score in the 2013-14 season. Over the summer, ULM was the only Division I institution in the state of Louisiana to earn the Team Academic Excellence award from the NABC

HOME COURT ADVANTAGE

398-170 All-Time in Fant-Ewing Coliseum

ULM RECORDS IN FANT-EWING

Year	Games	Record	Pct.	Avg. Attend.
1971-72	10	6-4	.600	4,190
1972-73	11	8-3	.727	3,232
1973-74	11	8-3	.727	3,250
1974-75	12	11-1	.917	3,454
1975-76	13	10-3	.769	5,451
1976-77	13	9-4	.692	5,073
1977-78	13	10-3	.769	4,459
1978-79	16	15-1	.937	5,215
1979-80	14	10-4	.714	3,678
1980-81	16	8-8	.500	3,067
1981-82	16	13-3	.812	3,808
1982-83	14	12-2	.857	2,946
1983-84	16	11-5	.688	2,098
1984-85	13	9-4	.692	2,380
1985-86	15	14-1	.933	2,114
1986-87	13	8-5	.615	2,582
1987-88	12	10-2	.833	2,582
1988-89	12	8-4	.667	2,861
1989-90	14	13-1	.928	2,949
1990-91	14	14-0	1.000	3,327
1991-92	12	9-3	.750	2,710
1992-93	14	14-0	1.000	3,892
1993-94	14	10-4	.714	3,351
1994-95	12	9-3	.750	3,619
1995-96	11	8-3	.727	2,182
1996-97	12	9-3	.750	1,822
1997-98	11	7-4	.636	1,301
1998-99	11	7-4	.636	1,913
1999-00	14	11-3	.786	2,003
2000-01	13	9-4	.692	935
2001-02	12	12-0	1.000	3,437
2002-03	12	7-5	.583	1,412
2003-04	13	9-4	.692	1,624
2004-05	13	6-7	.462	1,296
2005-06	13	8-5	.615	793
2006-07	14	14-0	1.000	1,952
2007-08	12	5-7	.417	1,338
2008-09	14	8-6	.571	907
2009-10	14	8-6	.571	1,398
2010-11	13	4-9	.308	1,400
2011-12	13	0-13	.000	1,438
2012-13	12	3-9	.250	1,255
2013-14	12	6-6	.500	1,513
2014-15	9	8-1	.889	1,326
TOTALS	568	398-170	.701	



ULM Warhawks Men's Basketball

University of Louisiana at Monroe



WE ARE ULM

12 REGULAR SEASON CHAMPIONSHIPS

1961-62 - Gulf States Conference
 1964-65 - Gulf States Conference
 1978-79 - Atlantic Sun Conference
 1979-80 - Atlantic Sun Conference
 1985-86 - Southland Conference
 1989-90 - Southland Conference
 1990-91 - Southland Conference
 1992-93 - Southland Conference
 1993-94 - Southland Conference
 1995-96 - Southland Conference
 1996-97 - Southland Conference
 2006-07 - Sun Belt Conference West Division

NINE POST-SEASON APPEARANCES

1978-79 - NIT
 1981-82 - NCAA Tournament
 1985-86 - NCAA Tournament
 1987-88 - NIT
 1989-90 - NCAA Tournament
 1990-91 - NCAA Tournament
 1991-92 - NCAA Tournament
 1992-93 - NCAA Tournament
 1995-96 - NCAA Tournament

EIGHT TOURNAMENT CHAMPIONSHIPS

1978-79 - Atlantic Sun Conference
 1981-82 - Atlantic Sun Conference
 1985-86 - Southland Conference
 1989-90 - Southland Conference
 1990-91 - Southland Conference
 1991-92 - Southland Conference
 1992-93 - Southland Conference
 1995-96 - Southland Conference

Numerical Roster

No.	Player	Pos.	Ht.	Wt.	Cl.	Hometown (Previous School)
0	Williams, Marvin	C	6-8	245	Sr.	Memphis, Tenn. (NW Florida State College)
1	Brown, Alex	G	6-4	185	Fr.	Vernon, Fla. (Vernon HS)
2	Harvey, DeMondre	F	6-7	210	Jr.	Minden, La. (Pearl River CC)
3	Cooper, Prince	G	6-4	215	So.	Freeport, Bahamas (Miami-Dade College)
4	Foster, Mack	G	6-2	185	Jr.	Beulah, Miss. (East Mississippi CC)
5	Samuel, Jamaal	F	6-9	205	Jr.	New Orleans, La. (Illinois State)
10	Taylor, Roderick	F	6-8	210	Fr.	Harker Heights, Texas (Harker Heights HS)
11	Coppola, Nick	G	5-11	190	So.	Richmond, Va. (Benedictine Prep)
12	Ongwae, Tylor	F	6-7	205	Sr.	Eldoret, Kenya (Ranger College)
13	Deng, Majok	F	6-10	190	Jr.	Adelaide, Australia (Indian Hills CC)
20	Amajoyi, Chinedu	G	6-3	195	Sr.	Rancho Cucamonga, Calif. (Kilgore College)
22	Richard, Lance	G	5-10	175	RFr.	Monroe, La. (Sterlington HS)
32	Roberson, Justin	G	6-1	185	Jr.	Natchitoches, La. (Western Texas)

COACHING STAFF

Head Coach: Keith Richard (ULM '82)
 Assistant Coach: Ryan Cross (Buffalo '95)
 Assistant Coach: Lonnie Cooper (Louisiana Tech '99)

Assistant Coach: J.A. Anglin (LSU Shreveport '10)
 Graduate Assistant: Luke Richard
 Team Manager: Gil Williams

PRONUNCIATION

Keith/Lance/Luke RICHARD Ree-SHARD
 CHINEDU OMAJOYI Chin-ih-due Om-uh-joy
 TYLOR ONGWAE Tie-ler Ong-why
 MAJOK Deng Muh-jook
 Justin ROBERSON Rob-er-sin
 Nick COPPOLA Cuh-pole-uh



BY CLASS

Seniors (3)..... Chinedu Amajoyi
 Tylor Ongwae
 Marvin Williams
 Juniors (5) Majok Deng
 Mack Foster
 DeMondre Harvey
 Justin Roberson
 Jamaal Samuel
 Sophomores (2) Prince Cooper
 Nick Coppola
 Freshmen (3)..... Alex Brown
 Lance Richard
 Roderick Taylor

BY POSITION

Guards (7) Chinedu Amajoyi
 Alex Brown
 Prince Cooper
 Nick Coppola
 Mack Foster
 Lance Richard
 Justin Roberson
 Forwards (5)..... Majok Deng
 DeMondre Harvey
 Tylor Ongwae
 Jamaal Samuel
 Roderick Taylor
 Center (1) Marvin Williams

BY STATE/COUNTRY

Australia..... Majok Deng
 Bahamas Prince Cooper
 California..... Chinedu Amajoyi
 Florida..... Alex Brown
 Kenya Tylor Ongwae
 Louisiana (4) DeMondre Harvey
 Lance Richard
 Justin Roberson
 Jamaal Samuel
 Mississippi..... Mack Foster
 Tennessee Marvin Williams
 Texas Roderick Taylor
 Virginia Nick Coppola



ULM Warhawks Men's Basketball

University of Louisiana at Monroe



HONORING VINING

The ULM men's basketball program will honor legendary former head coach Mike Vining by raising a banner featuring the number "402" in a special halftime ceremony during the Warhawks game on Saturday, Jan. 24, 2015 against Georgia Southern at Fant-Ewing Coliseum.

The 402 represents the total number of Vining's regular season and post-season victories over his 24 seasons as ULM head coach from 1981-2005.

"The number 402 was selected to incorporate and embody all of Mike's accomplishments and his countless contributions to the ULM men's basketball program," said current ULM head coach Keith Richard. "This banner will serve as a symbol of the enduring legacy of Mike Vining, one of the greatest coaches in ULM history and a member of the ULM family."

Vining is a member of the ULM Hall of Fame, Southland Conference Hall of Honor, the Louisiana Sports Hall of Fame and the LABC Hall of Fame.

In Vining's very first season in 1981-82, he coached the Warhawks to the NCAA Tournament after winning the Atlantic Sun. Vining made return trips to the big dance in 1986, 1990, 1991, 1992, 1993 and 1996. Additionally, his 1987-88 squad secured a spot in the NIT.

Vining posted six 20-win seasons and won 19 games three other times. His teams earned Southland Conference regular season titles in 1986, 1990, 1991, 1993, 1994, 1996 and 1997. The Warhawks won conference tournament crowns in 1986, 1990, 1991, 1992, 1993 and 1996 for a total of 14 championships.

Under Vining, ULM was the first team

to ever win four straight Southland Conference Tournaments, the first to win season and tournament championships in back-to-back years and the first to go two seasons with only one conference loss each year.

His 1992-93 squad posted the most wins in school history with a 27-4 record. ULM's only other 25-win season came under Vining in 1990-91 when he coached the team to a 25-8 tally.

Seven of his players earned Player of the Year honors, to go along with five Newcomer of the Year selections and 46 All-Conference picks. 16 of Vining's players were 1,000-point scorers and seven-footer Wojciech Myrda set the NCAA record in career blocks in 2002.

In NCAA Tournament games, Vining's ULM teams went up against players like Wake Forest's Tim Duncan, Duke's Christian Laettner, Bobby Hurley and Grant Hill and Iowa's Acie Earl. Vining matched wits with Mike Krzyzewski (Duke), Lute Olson (Iowa) and Jerry Taranian (UNLV).

In 1962, Vining enrolled at ULM after playing on three district championship teams at Forest High School. Though a good basketball player under Lenny Fant, Vining starred on the baseball team and helped ULM to the Gulf States Conference championships as a pitcher in 1964 and 1966.

Following his graduation with a Bachelor's Degree in Health and Physical Education in 1967, Vining spent two years coaching the junior varsity team while studying towards his Master's Degree.

Vining served two years as an Army officer, part of it in Vietnam, before returning to Louisiana to take over as the head coach at Bastrop High School in 1971. In seven years, he coached the Rams to a 175-47 record, six playoff appearances and a state title.

Vining returned to ULM in 1978 and spent one season as an assistant to Fant and two to Benny Hollis. He then took over at the helm in 1981.





ULM Warhawks Men's Basketball

University of Louisiana at Monroe



ULM Quick Facts

Location _____ Monroe, La.
 Enrollment _____ 8,527
 Founded _____ 1931
 Nickname/Mascot _____ Warhawks/Ace
 Colors _____ Maroon & Gold
 President _____ Dr. Nick Bruno
 Director of Athletics _____ Brian Wickstrom
 Conference _____ Sun Belt
 Affiliation _____ NCAA Division I
 All-Time Record _____ 920-816 (63rd season)
 Winning Seasons _____ 38 (20+ wins 10 times)
 Home Venue _____ Fant-Ewing Coliseum (7000)
 Playing Surface _____ Maple
 Opened _____ 1971
 Press Row Phone _____ 318-342-6920

Head Coach _____ Keith Richard
 Record at ULM _____ 36-96 (fifth year)
 Career Record _____ 186-213 (14th year)
 Assistant Coach _____ Ryan Cross
 Assistant Coach _____ Lonnie Cooper
 Assistant Coach _____ J.A. Anglin
 Graduate Assistant _____ Luke Richard
 Team Manager _____ Gil Williams
 Athletic Trainer _____ Jeremy Teblum

Website _____ www.ulmwarhawks.com
 Facebook _____ www.facebook.com/warhawks
 Twitter _____ @ULM_MBB

Scouting Georgia Southern

Georgia Southern (12-4, 5-2 SBC) comes to ULM after pulling out a defensive win, 45-43, over Texas State on Thursday on the road. The Eagles have won five of their last six games. Of their four losses on the season, three of them have been by four points or less. Ga. Southern is 7-0 at home this year and 5-4 on the road. Its only conference losses came at UT Arlington, 62-61, and at Troy, 75-71.

Jelani Hewitt leads the team in scoring with 20.1 points per game. He's shooting .378 (51-135) from three-point range and .898 (97-108) from the free throw line. Trent Wiederman scores 12.6 points per outing and also averages a team-high 6.6 rebounds per contest.

It's the first meeting between the two programs since Feb. 27, 1982 when ULM came out on top, 85-73. It was ULM's final year in the Atlantic Sun Conference and coach Mike Vining's first season. The Warhawks are 8-1 all-time against the Eagles and Keith Richard went 7-0 against them in his playing career.

Mark Byington is in his second year as head coach. In his first season, the final season for the Eagles in the Southern Conference, Georgia Southern made its first semifinal appearance in the conference tournament since 2004-05.

Byington previously spent nine seasons as an assistant coach at the College of Charleston. CofC posted an overall record of 194-100 and a 108-51 mark in the SoCon during Byington's time there, including six 20-win seasons and three regular season titles.

All-Time Series History vs. Georgia Southern

ULM leads, 8-1
 At ULM: ULM leads, 4-0
 At GS: ULM leads, 4-1
 On Neutral Courts: Tied, 0-0

ULM's Record by Starting Lineup

Coppola-Foster-Ongwae-Deng-Williams (6-1, 6-1 SBC)
 Coppola-Roberson-Ongwae-Samuel-Deng (1-0, 0-0 SBC)
 Coppola-Roberson-Ongwae-Deng-Harvey (3-1, 0-0 SBC)
 Coppola-Roberson-Ongwae-Deng-Williams (2-4, 0-0 SBC)
 Coppola-Amajoyi-Ongwae-Samuel-Harvey (0-1, 0-1 SBC)

Where ULM Ranks Nationally...

11th in 3FG% defense (.274)
 14th in FG% defense (.374)
 36th in total blocks (93)
 45th in scoring defense (60.4 ppg)
 51st in defensive rebs (26.2 drpg)

2014-15 SBC Preseason

Poll (First-place votes in parenthesis)

- Georgia State 121 (11)
- UL-Lafayette 110
- UALR 94
- UT Arlington 75
- Arkansas State 73
- ULM 69**
- Texas State 43
- Troy 42
- Georgia Southern 38
- South Alabama 38
- Appalachian State 23

SUN BELT CONFERENCE PRESEASON TEAMS

Preseason First Team All-Conference

Jelani Hewitt (Georgia Southern, Senior, Guard)
 Ryan Harrow (Georgia State, Senior, Guard)
 R.J. Hunter (Georgia State, Junior, Guard)
 Shawn Long (UL Lafayette, Senior, Forward)
 Lonnie McClanahan (UT Arlington, Senior, Guard)

Preseason Second Team All-Conference

Josh Hagins (UALR, Junior, Guard)
 James White (UALR, Junior, Forward)
 Xavian Rimmer (UL Lafayette, Senior, Guard)
Tylor Ongwae (ULM, Senior, Forward)
 Emani Grant (Texas State, Junior, Forward)

Preseason Third Team All-Conference

Tab Hamilton (Appalachian State, Senior, Guard)
 Trent Wiedeman (Georgia Southern, Senior, Guard)
 Curtis Washington (Georgia State, Senior, Forward)
 Jamel Outler (UT Arlington, Senior, Guard)
 Kevin Thomas (Troy, Senior, Forward)

Preseason Player of the Year

R.J. Hunter (Georgia State, Junior, Guard)



SUN BELT
CONFERENCE



ULM Warhawks Men's Basketball

University of Louisiana at Monroe



The Last Time ULM...

Scored 100 or more points
 Scored 90 or more points
 Scored 80 or more points
 Scored fewer than 40 points
 Held an opponent to under 50 points
 Held an opponent to under 40 points
 Won by 30 or more points
 Won by 40 or more points
 Won by 50 or more points
 Won by 60 or more points
 Had four double-digit scorers
 Had five double-digit scorers
 Had no double-digit scorers
 Had 20 or more assists
 Had fewer than 10 assists
 Had 10 or more blocks
 Had 10 or more steals
 Had 25 or more turnovers
 Had fewer than 10 turnovers
 Made 30 or more field goals
 Made 40 or more field goals
 Made 50 or more field goals
 Shot over 60 pct from field
 Shot less than 20 pct from field
 Made 10 or more 3-pointers
 Made 15 or more 3-pointers
 Shot over 50 pct from 3FG
 Shot over 60 pct from 3FG
 Shot less than 20 pct from 3FG
 Made 20 or more free throws
 Made 30 or more free throws
 Shot 80-90 pct free throws
 Shot over 90 pct free throws
 Won on a buzzer beater
 Lost on a buzzer beater
 Won on the last possession
 Lost on the last possession
 Won in overtime
 Won in double overtime
 Won in triple overtime
 Had two double-doubles in one game
 Had two 20+ scorers in one game

106, vs. Champion Baptist (11/17/14)
 106, vs. Champion Baptist (11/17/14)
 82, vs. Northwestern State (12/9/14)
 36, vs. Texas State (1/11/2014)
 39, vs. Champion Baptist (11/17/14)
 39, vs. Champion Baptist (11/17/14)
 67, vs. Champion Baptist (11/17/14)
 67, vs. Champion Baptist (11/17/14)
 67, vs. Champion Baptist (11/17/14)
 67, vs. Champion Baptist (11/17/14)
 4, vs. Arkansas State (1/5/15)
 5, vs. UALR (1/17/15)
 at Georgia State (12/30/14)
 20, vs. Northwestern State (12/9/14)
 9, at UL-Lafayette (1/19/15)
 10, vs. Champion Baptist (11/17/14)
 12, vs. Louisiana College (12/6/14)
 29, at Northwestern State (11/21/13)
 8, vs. Troy (1/15/15)
 30, vs. Central Baptist (12/16/14)
 41, vs. Champion Baptist (11/17/14)
 51, vs. Georgia Southern (2/8/79)
 .620 (31-50), at Nicholls State (11/28/11)
 .185 (10-54) at No. 3 Ohio State (12/27/13)
 10, at UT Arlington (1/9/14)
 15, vs. Middle Tennessee (1/24/08)
 .600 (6-10), at Samford (12/21/14)
 .643 (9-14), at Troy (1/16/14)
 .111 (1-9), vs. Arkansas State (1/5/15)
 24, vs. UL-Lafayette (1/4/14)
 30, vs. Troy (12/31/09)
 .889 (8-9), vs. Troy (1/15/15)
 .909 (10-11), at Texas State (1/10/15)
 W, 60-58, vs. SFA (Malcolm Thomas Jumper) (11/25/08)
 L, 76-73, at La. Tech (Kyle Gibson 3FG) (12/2/09)
 W, 66-65, at UALR (Pair of defensive stands) (3/10/14)
 L, 65-64, vs. SFA (Zac Downing 3FG, 4 secs) (11/23/10)
 W, 76-73, at UT Arlington (1/8/2015)
 W, 103-98 (2OT), vs. UL-Lafayette (1/4/2014)
 W, 107-106 (3OT), at La. Tech (1/5/1970)
 Tylor Ongwae & DeMondre Harvey, vs. Northwestern State (12/9/14)
 Tylor Ongwae (25) & Amos Olatayo (20), at UT Arlington (1/9/2014)

A ULM Player...

Had a double-double (pts-rbs)
 Had a double-double (pts-asts)
 Had a triple-double
 Had 20 points or more
 Had 30 points or more
 Had 40 points or more
 Had 50 points or more
 Made 10 or more field goals
 Made 15 or more field goals
 Made five or more 3FG
 Made 10 or more FT
 Had 10 or more rebounds
 Had 15 or more rebounds
 Had 20 or more rebounds
 Had 25 or more rebounds
 Had 30 or more rebounds
 Had 10 or more assists
 Had 15 or more assists
 Had five or more steals
 Had 10 or more steals
 Had five or more blocks
 Had 10 or more blocks
 Played 40 minutes or more

Majok Deng (14 pts, 15 rebs), vs. UALR (1/17/15)
 Nick Coppola (12 pts, 12 asts), vs. Louisiana College (12/6/14)
 Wojciech Mydra (11 pts, 10 rebs, 10 blks) vs. SHSU (1/24/02)
 Marvin Williams (22), vs. UT Arlington (1/8/15)
 Amos Olatayo (30), at Northwestern State (11/21/13)
 Henry Steele (40), vs. Louisiana College (1/23/71)
 Glynn Saulters (51), vs. Nicholls State (1/1/68)
 Tylor Ongwae (10), vs. Central Baptist (12/16/14)
 Mike Smith (15), vs. Houston (12/15/99)
 Trent Mackey (5), vs. North Texas (2/14/13)
 Chinedu Amajoyi (10-12), vs. Arkansas State (1/30/2014)
 Majok Deng (15), vs. UALR (1/17/15)
 Majok Deng (15), vs. UALR (1/17/15)
 DeAndre Alexander (20), vs. Lamar (3/2/05)
 Calvin Natt (25), vs. Miss. State (12/5/78)
 Calvin Natt (31) vs. Georgia Southern (12/29/76)
 Nick Coppola (12), vs. Louisiana College (12/6/14)
 Jayon James (15), at FIU (2/2/13)
 Tylor Ongwae (5), vs. UALR (2/15/14)
 Arthur Hayes (10), vs. McNeese State (1983)
 Jayon James (5), vs. UALR (2/15/14)
 Wojciech Mydra (13), vs. UTSA (3/2/02)
 Nick Coppola & Tylor Ongwae (40 each), vs. UALR (1/17/15)

MISCELLANEOUS STATS 2014-15

Largest halftime lead

35 (53-18), vs. Champion Baptist (11/17/14)

Largest halftime deficit

11 (37-26), vs. Robert Morris (11/27/14)

Largest halftime lead surrendered in a loss

3 (26-23), at Georgia State (12/30/14)

Largest halftime deficit overcome in a win

8 (28-20), at UT Arlington (1/8/15)

Largest lead any time

67 (106-39), vs. Champion Baptist (11/17/14)

Largest deficit any time

20, (65-45) at Georgia State (12/30/14)

Largest lead surrendered in a loss

12, at No. 8 Florida (11/21/14)

Largest deficit overcome in a win

13, at UT Arlington (1/8/15)

Most points scored in a half

53, vs. Champion Baptist (11/17/14)

Fewest points scored in a half

19, two times

Most points allowed in a half

44, two times (vs. NSU/LSUA)

Fewest points allowed in a half

18, first half vs. Champion Baptist (11/17/14)

Largest Rebounding Advantage

+27 (48-21), vs. Champion Baptist (11/17/14)

Largest Rebounding Disadvantage

-13 (49-36), at No. 8 Florida (11/21/14)

Highest Plus Turnover Differential

+13 (24-11), vs. Champion Baptist (11/17/14)

Highest Minus Turnover Differential

-11 (15-4), vs. NSU (12/9/14)

Most 3FG Made In a Game

9, three times

Most 3FG Allowed in a Game

10, vs. NSU (12/9/14)



ULM Warhawks Men's Basketball

University of Louisiana at Monroe



2014-15 ULM MEN'S BASKETBALL

ULM Combined Team Statistics (as of Jan 22, 2015)

All games

Overall Stats

RECORD:	OVERALL	HOME	AWAY	NEUTRAL
ALL GAMES	12-7	8-1	4-4	0-2
CONFERENCE	6-2	3-1	3-1	0-0
NON-CONFERENCE	6-5	5-0	1-3	0-2

#	Player	gp-gs	min	avg	Total		3-Point		F-Throw		Rebounds				pf	dq	a	to	blk	stl	pts	avg
					fg-fga	fg%	3fg-fga	3fg%	ft-fa	ft%	off	def	tot	avg								
12	Ongwae, Tylor	19-19	627	33.0	97-218	.445	5-27	.185	60-70	.857	47	79	126	6.6	46	2	51	38	9	15	259	13.6
00	Williams, Marvin	18-13	397	22.1	68-113	.602	1-3	.333	32-50	.640	34	56	90	5.0	43	1	6	30	18	7	169	9.4
13	Deng, Majok	19-18	515	27.1	60-134	.448	19-57	.333	33-47	.702	31	100	131	6.9	35	0	26	26	32	12	172	9.1
32	Roberson, Justin	19-11	482	25.4	66-154	.429	5-22	.227	30-42	.714	9	59	68	3.6	48	4	41	36	3	21	167	8.8
11	Coppola, Nick	19-19	658	34.6	59-145	.407	26-72	.361	21-32	.656	3	45	48	2.5	35	1	80	37	0	19	165	8.7
05	Samuel, Jamaal	19-2	322	16.9	43-118	.364	17-61	.279	10-16	.625	11	54	65	3.4	31	0	7	21	17	9	113	5.9
04	Foster, Mack	19-7	326	17.2	35-95	.368	12-46	.261	8-15	.533	8	23	31	1.6	30	1	23	12	4	14	90	4.7
02	Harvey, DeMondre	19-5	277	14.6	27-46	.587	0-0	.000	13-23	.565	25	35	60	3.2	21	0	9	11	8	4	67	3.5
22	Richard, Lance	12-0	45	3.8	7-22	.318	6-21	.286	0-0	.000	0	4	4	0.3	4	0	0	2	1	2	20	1.7
03	Cooper, Prince	14-0	111	7.9	7-16	.438	0-0	.000	1-8	.125	6	13	19	1.4	5	0	9	8	1	2	15	1.1
20	Amajoyi, Chinedu	11-1	90	8.2	4-16	.250	0-6	.000	2-2	1.000	1	7	8	0.7	7	0	11	7	0	1	10	0.9
Team											31	22	53					4				
Total.....		19	3850		473-1077	.439	91-315	.289	210-305	.689	206	497	703	37.0	305	9	263	232	93	106	1247	65.6
Opponents.....		19	3854		405-1083	.374	98-358	.274	240-325	.738	214	448	662	34.8	287	-	217	228	61	113	1148	60.4

TEAM STATISTICS	ULM	OPP
SCORING	1247	1148
Points per game	65.6	60.4
Scoring margin	+5.2	-
FIELD GOALS-ATT	473-1077	405-1083
Field goal pct	.439	.374
3 POINT FG-ATT	91-315	98-358
3-point FG pct	.289	.274
3-pt FG made per game	4.8	5.2
FREE THROWS-ATT	210-305	240-325
Free throw pct	.689	.738
F-Throws made per game	11.1	12.6
REBOUNDS	703	662
Rebounds per game	37.0	34.8
Rebounding margin	+2.2	-
ASSISTS	263	217
Assists per game	13.8	11.4
TURNOVERS	232	228
Turnovers per game	12.2	12.0
Turnover margin	-0.2	-
Assist/turnover ratio	1.1	1.0
STEALS	106	113
Steals per game	5.6	5.9
BLOCKS	93	61
Blocks per game	4.9	3.2
ATTENDANCE	11932	41001
Home games-Avg/Game	9-1326	8-4555
Neutral site-Avg/Game	-	2-2281

Date	Opponent		Score	Att.
11/15/14	at UAB	W	74-65	2403
11/17/14	CHAMPION BAPTIST	W	106-39	1078
11/21/14	at Florida	Lot	56-61	11003
11/26/14	vs Coastal Carolina	L	48-61	2426
11/27/14	vs Robert Morris	L	54-71	2136
12/6/14	LOUISIANA COLLEGE	W	83-55	1053
12/09/14	NORTHWESTERN STATE	W	82-74	1082
12/13/14	at New Mexico	L	46-54	13710
12/16/14	CENTRAL BAPTIST	W	78-53	1060
12/19/14	LSUA	W	76-71	1201
12/21/14	at Samford	L	50-64	1053
* 12/30/14	at Georgia State	L	45-65	1371
* 01/05/15	ARKANSAS STATE	W	70-61	1418
* 1/8/15	at UTA	Wot	76-73	1074
* 1/10/15	at Texas State	W	62-59	1612
* 01/15/15	TROY	W	63-54	1676
* 01/17/15	UALR	W	64-52	1793
* 1/19/15	at UL-Lafayette	W	57-55	4213
* 01/22/15	UTA	L	57-61	1571

* = Conference game

On the Season in the SBC, ULM Ranks...

First in FG% Defense: .374	Ongwae second in FT%: .857
First in 3FG% Defense: .274	Deng second in blocks: 1.7 bpg
First in Blocks: 4.9 bpg	Coppola second in Ast:Turn ratio: 2.2
Second in Scoring Defense: 60.4 ppg	Coppola third in Assists: 4.2 apg
Second in Assists: 13.8 apg	Williams third in FG%: .602
Second in Ast:Turn Ratio: 1.1	Deng third in def. rebs.: 5.3 drpg
Third in FG%: .439	
Third in Rebounding Margin: +2.2	

Score by Periods	1st	2nd	OT	Totals
ULM	580	653	14	1247
Opponents	502	630	16	1148



ULM Warhawks Men's Basketball

University of Louisiana at Monroe



2014-15 ULM MEN'S BASKETBALL

ULM Combined Team Statistics (as of Jan 22, 2015)

Conference games

Conference Stats

RECORD:	OVERALL	HOME	AWAY	NEUTRAL
ALL GAMES	6-2	3-1	3-1	0-0
CONFERENCE	6-2	3-1	3-1	0-0
NON-CONFERENCE	0-0	0-0	0-0	0-0

#	Player	gp-gs	min	avg	Total		3-Point		F-Throw		Rebounds											
					fg-fga	fg%	3fg-fga	3fg%	ft-fa	ft%	off	def	tot	avg	pf	dq	a	to	blk	stl	pts	avg
00	Williams, Marvin	8-7	219	27.4	45-65	.692	0-0	.000	20-28	.714	21	36	57	7.1	19	1	3	19	8	3	110	13.8
13	Deng, Majok	8-7	229	28.6	30-60	.500	12-30	.400	14-22	.636	15	40	55	6.9	15	0	15	14	11	5	86	10.8
12	Ongwae, Tylor	8-8	268	33.5	30-82	.366	2-14	.143	22-25	.880	17	36	53	6.6	18	1	18	13	5	8	84	10.5
32	Roberson, Justin	8-0	177	22.1	22-63	.349	2-10	.200	15-22	.682	5	19	24	3.0	21	2	12	11	1	6	61	7.6
11	Coppola, Nick	8-8	287	35.9	18-54	.333	7-28	.250	5-9	.556	0	24	24	3.0	12	0	31	19	0	8	48	6.0
04	Foster, Mack	8-7	166	20.8	15-49	.306	6-28	.214	6-9	.667	2	16	18	2.3	13	1	8	7	1	4	42	5.3
05	Samuel, Jamaal	8-1	107	13.4	13-43	.302	6-24	.250	0-1	.000	2	18	20	2.5	8	0	2	6	3	1	32	4.0
22	Richard, Lance	2-0	11	5.5	2-4	.500	2-4	.500	0-0	.000	0	1	1	0.5	1	0	0	1	0	0	6	3.0
02	Harvey, DeMondre	8-1	87	10.9	5-10	.500	0-0	.000	5-10	.500	5	7	12	1.5	9	0	5	2	1	2	15	1.9
03	Cooper, Prince	7-0	48	6.9	4-5	.800	0-0	.000	0-4	.000	1	5	6	0.9	4	0	4	4	0	1	8	1.1
20	Amajoyi, Chinedu	3-1	26	8.7	0-1	.000	0-1	.000	2-2	1.000	0	0	0	0.0	0	0	2	1	0	1	2	0.7
Team											10	5	15									
Total.....		8	1625		184-436	.422	37-139	.266	89-132	.674	78	207	285	35.6	120	5	100	97	30	39	494	61.8
Opponents.....		8	1627		167-437	.382	38-145	.262	108-144	.750	73	201	274	34.2	119	-	91	87	20	50	480	60.0

TEAM STATISTICS	ULM	OPP
SCORING	494	480
Points per game	61.8	60.0
Scoring margin	+1.8	-
FIELD GOALS-ATT	184-436	167-437
Field goal pct	.422	.382
3 POINT FG-ATT	37-139	38-145
3-point FG pct	.266	.262
3-pt FG made per game	4.6	4.8
FREE THROWS-ATT	89-132	108-144
Free throw pct	.674	.750
F-Throws made per game	11.1	13.5
REBOUNDS	285	274
Rebounds per game	35.6	34.2
Rebounding margin	+1.4	-
ASSISTS	100	91
Assists per game	12.5	11.4
TURNOVERS	97	87
Turnovers per game	12.1	10.9
Turnover margin	-1.2	-
Assist/turnover ratio	1.0	1.0
STEALS	39	50
Steals per game	4.9	6.3
BLOCKS	30	20
Blocks per game	3.8	2.5
ATTENDANCE	6458	8270
Home games-Avg/Game	4-1614	4-2068
Neutral site-Avg/Game	-	0-0

Date	Opponent	Score	Att.
* 12/30/14	at Georgia State	L 45-65	1371
* 01/05/15	ARKANSAS STATE	W 70-61	1418
* 1/8/15	at UTA	Wot 76-73	1074
* 1/10/15	at Texas State	W 62-59	1612
* 01/15/15	TROY	W 63-54	1676
* 01/17/15	UALR	W 64-52	1793
* 1/19/15	at UL-Lafayette	W 57-55	4213
* 01/22/15	UTA	L 57-61	1571

* = Conference game

In SBC Games Only, ULM Ranks...

First in Scoring Defense: 60.0 ppg	Williams first in FG%: .692
First in FG% Defense: .382	Williams first in off. rebs.: 2.6 orpg
Second in 3FG% Defense: .262	Coppola second in Assists: 3.9 apg
Second in def. reb%: .735	Deng third in Blocks: 1.4 bpg
Third in Blocks: 3.8 bpg	
Third in def. rebs: 26.0 drpg	

Score by Periods	1st	2nd	OT	Totals
ULM	220	265	9	494
Opponents	204	270	6	480



ULM Warhawks Men's Basketball

University of Louisiana at Monroe



ULM - TEAM GAME HIGHS

POINTS	106	CHAMPION BAPTIST (11/17/14)
	83	LOUISIANA COLLEGE (12/6/14)
	82	NORTHWESTERN STATE (12/09/14)
	78	CENTRAL BAPTIST (12/16/14)
	76	at UTA (1/8/15)
	76	LSUA (12/19/14)
FIELD GOALS MADE	41	CHAMPION BAPTIST (11/17/14)
	35	LOUISIANA COLLEGE (12/6/14)
FIELD GOAL ATTEMPTS	70	at UTA (1/8/15)
	69	CHAMPION BAPTIST (11/17/14)
FIELD GOAL PERCENTAGE	.594 (41-69)	CHAMPION BAPTIST (11/17/14)
	.574 (31-54)	NORTHWESTERN STATE (12/09/14)
3 PT FIELD GOALS MADE	9	at UTA (1/8/15)
	9	at Florida (11/21/14)
	9	CHAMPION BAPTIST (11/17/14)
3 PT FG ATTEMPTS	31	at UTA (1/8/15)
	25	vs Coastal Carolina (11/26/14)
	25	at Florida (11/21/14)
3 PT FG PERCENTAGE	.600 (6-10)	at Samford (12/21/14)
	.375 (9-24)	CHAMPION BAPTIST (11/17/14)
	.375 (6-16)	at UAB (11/15/14)
	.375 (3-8)	NORTHWESTERN STATE (12/09/14)
FREE THROWS MADE	19	UALR (01/17/15)
	17	LSUA (12/19/14)
	17	NORTHWESTERN STATE (12/09/14)
FREE THROW ATTEMPTS	30	UALR (01/17/15)
	24	CHAMPION BAPTIST (11/17/14)
FREE THROW PERCENTAGE	.909 (10-11)	at Texas State (1/10/15)
	.889 (8-9)	TROY (01/15/15)
REBOUNDS	48	CHAMPION BAPTIST (11/17/14)
	47	at UTA (1/8/15)
	47	NORTHWESTERN STATE (12/09/14)
ASSISTS	21	LOUISIANA COLLEGE (12/6/14)
	21	CHAMPION BAPTIST (11/17/14)
STEALS	14	CHAMPION BAPTIST (11/17/14)
	12	LOUISIANA COLLEGE (12/6/14)
BLOCKED SHOTS	10	CHAMPION BAPTIST (11/17/14)
	8	NORTHWESTERN STATE (12/09/14)
TURNOVERS	20	LOUISIANA COLLEGE (12/6/14)
	18	at Texas State (1/10/15)
FOULS	24	at UTA (1/8/15)

ULM Career Double-Doubles

Tylor Ongwae (5)

27 pts, 11 rebs vs. UL-L (1/4/14)
 27 pts, 10 rebs vs. Ga. State (1/25/14)
 16 pts, 11 rebs at UL-L (2/1/14)
 19 pts, 10 rebs vs. NSU (12/9/14)*
 15 pts, 10 rebs vs. Troy (1/15/15)*

Majok Deng (4)

14 pts, 10 rebs vs. C. Car (11/26/14)*
 14 pts, 11 rebs vs. La. Col (12/6/14)*
 11 pts, 11 rebs vs. Cen Bap (12/16/14)*
 14 pts, 15 rebs vs. UALR (1/17/15)*

Nick Coppola (1)

12 pts, 12 asts vs. La. Col (12/6/14)*

DeMondre Harvey (1)

12 pts, 10 rebs, vs. NSU (12/9/14)*

Marvin Williams (3)

13 pts, 11 rebs at NSU (11/21/13)
 11 pts, 13 rebs at ASU (3/6/14)
 22 pts, 13 rebs at UTA (1/8/15)*

* indicates this season



ULM Warhawks Men's Basketball

University of Louisiana at Monroe



SUN BELT CONFERENCE STANDINGS

As of 1/24/15

School	SBC	Pct.	Overall	Pct.	Streak
1. ULM	6-2	.750	12-7	.632	L1
2. Georgia Southern	5-2	.714	12-4	.750	W1
T-3. Georgia State	5-3	.625	12-7	.632	W1
T-3. UT Arlington	5-3	.625	11-7	.611	W2
T-3. UL-Lafayette	5-3	.625	11-8	.579	W1
6. Appalachian State	4-4	.500	7-10	.412	W3
T-7. Texas State	4-5	.444	10-8	.556	L3
T-7. South Alabama	4-5	.444	6-13	.316	L1
9.. Arkansas State	3-6	.333	8-10	.444	L2
T-10. Troy	2-6	.250	7-10	.412	L2
T-10. UALR	2-6	.250	7-11	.389	W1

Thursday's Results

App State 69, Troy 64
 UT Arlington 61, ULM 57
 UL-Lafayette 96, Arkansas St. 59
 Ga. Southern 45, Texas State 43
 UALR 73, Troy 65

Saturday's Games

UL-Lafayette at Georgia St., 1:15 PM
 Georgia Southern at ULM, 4:00 PM
 Arkansas State at Troy, 4:15 PM
 Appalachian St. at Texas St., 4:30 PM
 UT Arlington at UALR, 5:00 PM

Name	Career 10+ Points	Career 10+ Rebs	Career 10+ Asts
Tylor Ongwae	36 times (20+ 12 times)	5 times	
Marvin Williams	17 times (20+ 2 times)	3 times	
Nick Coppola	17 times		1 time
Jamaal Samuel	4 times		
Chinedu Amajoyi	3 times		
DeMondre Harvey	2 times	1 time	
Name	Season 10+ Points	Season 10+ Rebs	Season 10+ Asts
Tylor Ongwae	12 times (20+ 3 times)	2 times	
Majok Deng	11 times	4 times	
Nick Coppola	8 times		1 time
Justin Roberson	8 times		
Marvin Williams	7 times (20+ 2 times)	1 time	
Jamaal Samuel	3 times		
Mack Foster	2 times		
DeMondre Harvey	1 time	1 time	

Single-Game Categorical Highs 2014-15

Points	Tylor Ongwae - 25, two times, vs. CEBC/LSUA
Field Goals Made	Tylor Ongwae - 10, vs. Central Baptist
3FG Made	3, eight times
Free Throws Made	Tylor Ongwae - 9, at Texas State
Rebounds	Majok Deng - 15, vs. UALR
Assists	Nick Coppola - 12, vs. Louisiana College
Steals	Mack Foster/Justin Roberson - 4, vs LC/at TXST
Blocks	Majok Deng/Jamaal Samuel - 4, at UAB/vs. C. Car.
Minutes	Nick Coppola - 45, at No. 8 Florida

Number of times in 2014-15 a ULM student-athlete has led the team in...

Player	Points	Rebs	Assists	FGM	FGA	FTM	FTA	3FGM	3FGA	Blocks	Steals	Mins
Tylor Ongwae	7	8	5	9	13	8	7	2	1	3	5	7
Marvin Williams	5	5		5	3	5	7			7	2	
Nick Coppola	3		12	2	1	1	1	9	9		7	11
Majok Deng	2	8	3	2	2	3	4	7	5	11	4	
Jamaal Samuel	2	2		1	2			4	5	3	4	
Justin Roberson	1	2	4	2	1	3	4			1	7	1
DeMondre Harvey		2	1							1	3	
Mack Foster			2				1	4	2	2	4	1
Lance Richard								1	2			
Chinedu Amajoyi			1									
Prince Cooper												1

Note: If multiple student-athletes tie in a category in a single game, they all receive credit for leading the team



ULM Warhawks Men's Basketball

University of Louisiana at Monroe



0 Marvin Williams

Senior | Center | 6-8 | 245
Memphis, Tenn. | NW Florida State College

	Season-High	Career-High
Pts	22, two times	22, two times
FG	9, two times	9, two times
3FG	1, at Florida (11/22/14)	1, two times
FT	6, at UTA (1/8/15)	6, at UTA (1/8/15)
Ast	1, six times	2, three times
Reb	13, at UTA (1/8/15)	13, two times
Blocks	3, two times	4, vs. UALR (2/15/14)
Steals	2, vs. CHBC (11/17/14)	2, vs. CHBC (11/17/14)
Min	36, vs. RMU (11/27/14)	36, vs. RMU (11/27/14)



2 DeMondre Harvey

Junior | Forward | 6-7 | 210
Memphis, Tenn. | NW Florida State College

	Season-High	Career-High
Pts	12, vs. NSU (12/9/14)	12, vs. NSU (12/9/14)
FG	6, vs. NSU (12/9/14)	6, vs. NSU (12/9/14)
3FG	N/A	N/A
FT	5, vs. LSU (12/19/14)	5, vs. LSU (12/19/14)
Ast	3, vs. ASU (1/5/15)	3, vs. ASU (1/5/15)
Reb	10, vs. NSU (12/9/14)	10, vs. NSU (12/9/14)
Blocks	3, vs. CHBC (11/17/14)	3, vs. CHBC (11/17/14)
Steals	1, four times	3, vs. ASU (3/1/14)
Min	30, two times	30, two times

Opp	GS	Min	FG-FGA/Pct.	3FG-FGA	FT-FTA/PCT	O-D-T	PF-FO	A	TO	Blk	Stl	Pts/Avg
UAB	*	16	1-5/.200	0-1/.000	1-1/1.000	0-0-0	3-0	0	0	0	1	3/3.0
CH BAP	*	18	3-3/1.000	0-0/.000	5-8/.625	1-3-4	2-0	1	1	0	2	11/7.0
Florida	*	27	3-11/.273	1-1/1.000	0-0/.000	3-1-4	2-0	0	1	2	0	7/7.0
C. Car	*	6	0-1/.000	0-1/.000	0-0/.000	0-2-2	4-0	0	2	0	0	0/5.3
RMU	*	36	6-11/.545	0-0/.000	2-5/.400	2-3-5	3-0	1	1	3	1	14/7.0
La. Col		10	1-1/1.000	0-0/.000	0-0/.000	0-3-3	1-0	0	1	0	0	2/6.2
NSU		9	1-1/1.000	0-0/.000	0-0/.000	0-2-2	2-0	0	2	1	0	2/5.6
N.M.	*	18	2-4/.500	0-0/.000	2-2/1.000	3-2-5	2-0	0	2	2	0	6/5.6
CE BAP					DNP							
LSU-A		22	4-7/.571	0-0/.000	2-6/.333	2-2-4	1-0	0	0	2	0	10/6.1
Samford		16	2-4/.500	0-0/.000	0-0/.000	2-2-4	4-0	1	1	0	0	4/5.9
Ga. St.		17	1-3/.333	0-0/.000	5-6/.833	2-4-6	2-0	1	3	0	0	7/6.0
Ark. St.	*	33	9-12/.750	0-0/.000	4-5/.800	3-4-7	1-0	1	2	0	0	22/7.3
UTA	*	32	8-12/.667	0-0/.000	6-6/1.000	6-7-13	2-0	0	2	2	0	22/8.5
TXST	*	31	9-9/1.000	0-0/.000	0-0/.000	3-3-6	2-0	1	5	0	0	18/9.1
Troy	*	24	4-7/.571	0-0/.000	0-0/.000	1-5-6	3-0	0	3	3	0	8/9.1
UALR	*	23	5-8/.625	0-0/.000	0-2/.000	1-3-4	5-1	0	2	1	0	10/9.1
UL-L	*	31	3-8/.375	0-0/.000	0-3/.000	3-4-7	4-0	0	2	1	2	6/8.9
UTA	*	28	6-6/1.000	0-0/.000	5-6/.833	2-6-8	0-0	0	0	1	1	17/9.4
Ga. So.												
Troy												
USA												
UALR												
Ga. So.												
UL-L												
App. St.												
Ark. St.												
USA												
App. St.												
Ga. St.												
TXST												
TBA												
Totals	13	397	68-113/.602	1-3/.333	32-50/.640	34-56-90	43-1	6	30	18	7	169/9.4

Opp	GS	Min	FG-FGA/Pct.	3FG-FGA	FT-FTA/PCT	O-D-T	PF-FO	A	TO	Blk	Stl	Pts/Avg
UAB		22	2-7/.286	0-0/.000	1-2/.500	3-2-5	0-0	0	1	0	0	5/5.0
CH BAP		21	2-3/.667	0-0/.000	2-3/.667	6-3-9	1-0	0	1	3	0	9/7.0
Florida		6	0-0/.000	0-0/.000	0-0/.000	0-0-0	1-0	0	0	0	0	0/4.7
C. Car		15	0-1/.000	0-0/.000	0-0/.000	1-0-1	1-0	0	0	0	0	0/3.5
RMU		1	0-0/.000	0-0/.000	0-0/.000	0-0-0	0-0	0	0	0	0	0/2.2
La. Col	*	30	4-7/.571	0-0/.000	0-0/.000	2-7-9	1-0	2	3	1	1	8/3.2
NSU	*	30	6-6/1.000	0-0/.000	0-0/.000	1-9-10	1-0	1	2	2	0	12/4.4
N.M.		10	0-0/.000	0-0/.000	0-0/.000	1-0-1	3-0	1	1	1	0	0/3.9
CE BAP		25	4-7/.571	0-0/.000	0-0/.000	4-4-8	3-0	0	0	0	0	8/4.3
LSU-A	*	16	1-1/1.000	0-0/.000	5-5/1.000	0-2-2	0-0	0	1	0	1	7/4.6
Samford	*	14	3-4/.750	0-0/.000	0-3/.000	2-1-3	1-0	0	0	0	0	6/4.7
Ga. St.	*	20	1-4/.250	0-0/.000	1-2/.500	2-2-4	1-0	0	0	0	0	3/4.6
Ark. St.		13	2-2/1.000	0-0/.000	0-1/.000	1-3-4	2-0	3	1	0	0	4/4.5
UTA		7	1-2/.500	0-0/.000	0-0/.000	0-1-1	1-0	0	1	0	1	2/4.4
TXST		9	0-1/.000	0-0/.000	0-0/.000	1-0-1	2-0	1	0	1	0	0/4.1
Troy		16	1-1/1.000	0-0/.000	0-0/.000	0-1-1	0-0	1	0	0	1	2/3.9
UALR		14	0-0/.000	0-0/.000	0-2/.000	0-0-0	2-0	0	0	0	0	0/3.7
UL-L		3	0-0/.000	0-0/.000	0-0/.000	0-0-0	1-0	0	0	0	0	0/3.5
UTA		5	0-0/.000	0-0/.000	4-5/.800	1-0-1	0-0	0	0	0	0	4/3.5
Ga. So.												
Troy												
USA												
UALR												
Ga. So.												
UL-L												
App. St.												
Ark. St.												
USA												
App. St.												
Ga. St.												
TXST												
TBA												
Totals	5	277	27-46/.587	0-0/.000	13-23/.565	25-35-60	21-0	9	11	8	4	67/3.5

2014-15 (SENIOR)

Posted game-highs of 17 points and eight rebounds vs. UTA... won SBC and Co-LSWA Player of the Week on Jan. 12 after leading the team to a 3-0 record and going 26-33 (.798) FG with 20.7 ppg and 8.7 rpg... came up huge with 18 points on 9-9 shooting at Texas State... matched career-highs of 22 points and 13 rebounds in a big 76-73 overtime win over UTA and had eight of ULM's nine points in overtime and was a perfect 6-6 from the free throw line... dominating career-high performance of 22 points and nine made field goals in the win over Arkansas State and also grabbed seven rebounds... put in 10 points in a win over UALR at home... registered 14 points, six field goals made and 36 minutes in the Battle 4 Atlantis against Robert Morris... grabbed a season-high six rebounds at Georgia State... tallied 11 points on a perfect 3-for-3 from the field, grabbed four rebounds and set a career-high two steals in a win over Champion Baptist... scored 10 points with four rebounds and a pair of blocks in a victory over LSU-A

2013-14 (JUNIOR)

Tallied a pair of double-doubles with 13 points and 10 rebounds at Northwestern State and 11 points and 13 rebounds at Arkansas State... led the team with 23 blocks, finishing top-10 in the SBC... averaged 8.5 points and 4.8 rebounds per game... shot 48.6 percent from the field (89-183) which was top-15 in the league... grabbed 2.1 offensive rebounds per game in conference play, eighth-best in the league... posted nine double-figure scoring games on the season including a career-high 19 points at No. 5 Kansas to outscore Preseason Player of the Year Andrew Wiggins... the 13 rebounds against the Red Wolves were the most by a Warhawk in a single-game on the season... turned in 14 points and nine rebounds against UT Arlington at the SBC Championships... rejected a career-high four blocks at home against UALR

2014-15 (JUNIOR)

Posted a career performance against Northwestern State with a double-double and personal bests of 12 points and 10 rebounds in the win; matched his career-high with 30 minutes after getting the start... also earned the start and logged 30 minutes against Louisiana College; recorded eight points and nine rebounds in the contest... big outing with nine points, nine rebounds and three blocks in the win over Champion Baptist

2013-14 (SOPHOMORE)

Led the team in field goal percentage with a .531 mark (34-64)... registered a career-high 11 points on four made field goals against Thomas... grabbed a career-high eight rebounds at both Ole Miss and UALR... played a career-high 25 minutes at home against WKU... career-high three steals at home against Troy... recorded 13 blocks and 13 steals on the season... made four starts and played in all 27 contests... averaged 3.1 points and 3.4 rebounds per game... led the team in rebounding in four games and in blocks in six games

PREVIOUS SCHOOL

Played at Pearl River Junior College in Poplarville, Miss. and averaged 6.4 points and 5.8 rebounds per game ... Played in all 25 games and made 15 starts ... Registered three double-doubles including 14 points and 11 rebounds in the final game of the season on March 8 ... Tallied a career-high 15 points and four blocks against Holmes Community College on Nov. 5 ... Shot 60.0 percent from the field on the season and 60.6 percent from the free throw line ... Will have three years of eligibility remaining at ULM



ULM Warhawks Men's Basketball

University of Louisiana at Monroe



3 Prince Cooper

Sophomore | Guard | 6-4 | 215
Freeport, Bahamas | Miami-Dade College

	Season-High	Career-High
Pts	3, vs. CHBC (11/17/14)	3, vs. CHBC (11/17/14)
FG	1, seven times	1, seven times
3FG	N/A	N/A
FT	1, vs. CHBC (11/17/14)	1, vs. CHBC (11/17/14)
Ast	3, vs. CHBC (11/17/14)	3, vs. CHBC (11/17/14)
Reb	5, vs. CHBC (11/17/14)	5, vs. CHBC (11/17/14)
Blocks	1, vs. CHBC (11/17/14)	1, vs. CHBC (11/17/14)
Steals	1, two times	1, two times
Min	24, vs. CHBC (11/17/14)	24, vs. CHBC (11/17/14)

Opp	GS	Min	FG-FGA/Pct.	3FG-FGA	FT-FTA/PCT	O-D-T	PF-FO	A	TO	Blk	Stl	Pts/Avg
UAB	5	0-1/.000	0-0/.000	0-0/.000	1-0-1	0-0	0	0	0	0	0	0/0.0
CH BAP	24	1-6/.167	0-0/.000	1-2/.500	2-3-5	1-0	3	2	1	1		3/1.5
Florida	6	1-2/.500	0-0/.000	0-0/.000	1-3-4	0-0	0	0	0	0		2/1.7
C. Car	12	1-1/1.000	0-0/.000	0-0/.000	0-2-2	0-0	1	1	0	0		2/1.8
RMU	8	0-0/.000	0-0/.000	0-0/.000	1-0-1	0-0	0	0	0	0		0/1.4
La. Col					DNP							
NSU					DNP							
N.M.	1	0-0/.000	0-0/.000	0-0/.000	0-0-0	0-0	0	0	0	0		0/1.2
CE BAP	7	0-1/.000	0-0/.000	0-2/.000	0-0-0	0-0	1	1	0	0		0/1.0
LSU-A					DNP							
Samford					DNP							
Ga. St.	18	1-2/.500	0-0/.000	0-2/.000	0-1-1	0-0	2	2	0	1		2/1.1
Ark. St.	4	1-1/1.000	0-0/.000	0-0/.000	1-0-1	0-0	0	0	0	0		2/1.2
UTA	8	1-1/1.000	0-0/.000	0-0/.000	0-1-1	2-0	0	0	0	0		2/1.3
TXST	5	1-1/1.000	0-0/.000	0-0/.000	0-2-2	0-0	1	0	0	0		2/1.4
Troy	5	0-0/.000	0-0/.000	0-0/.000	0-0-0	0-0	1	0	0	0		0/1.3
UALR					DNP							
UL-L	6	0-0/.000	0-0/.000	0-0/.000	0-0-0	0-0	0	0	0	0		0/1.2
UTA	2	0-0/.000	0-0/.000	0-2/.000	0-1-1	2-0	0	2	0	0		0/1.1
Ga. So.												
Troy												
USA												
UALR												
Ga. So.												
UL-L												
App. St.												
Ark. St.												
USA												
App. St.												
Ga. St.												
TXST												
TBA												
Totals	111	7-16/.438	0-0/.000	1-8/.125	6-13-.19	5-0	9	6	1	2		15/1.1

2014-15 (SOPHOMORE)

Set nearly every career high in a win against Champion Baptist including five rebounds and three assists in 24 minutes... hit a mid-range jumpers in conference against Georgia State, Arkansas State, UT Arlington and Texas State

PREVIOUS SCHOOL

Played one season at Miami-Dade JC (Fla.)... averaged 10.4 points, 6.4 rebounds and 2.1 assists per game... shot an astounding 83 percent from the field... earned Dean's List honors for his achievements in the classroom

HIGH SCHOOL

Lettered in both basketball and track & field at Piney Woods HS (Miss.)... averaged 12 points, eight rebounds and three assists per game... named team captain as a senior... state champion in the triple jump (track & field)... earned academic honor roll and the highest chemistry and algebra II award... graduated top-15 in his class



4 Mack Foster

Junior | Guard | 6-2 | 185
Beulah, Miss. | East Mississippi CC

	Season-High	Career-High
Pts	13, vs. CHBC (11/17/14)	13, vs. CHBC (11/17/14)
FG	5, vs. CHBC (11/17/14)	5, vs. CHBC (11/17/14)
3FG	3, two times	3, two times
FT	2, two times	2, two times
Ast	3, two times	3, two times
Reb	4, at UTA (1/8/15)	4, at UTA (1/8/15)
Blocks	1, three times	1, three times
Steals	4, vs. LC (12/6/14)	4, vs. LC (12/6/14)
Min	29, at TXST (1/10/15)	29, at TXST (1/10/15)

Opp	GS	Min	FG-FGA/Pct.	3FG-FGA	FT-FTA/PCT	O-D-T	PF-FO	A	TO	Blk	Stl	Pts/Avg
UAB	7	0-2/.000	0-2/.000	0-0/.000	0-0-0	1-0	0	0	1	0	0	0/0.0
CH BAP	24	5-9/.556	3-6/.500	0-0/.000	1-1-2	2-0	3	1	1	3		13/7.5
Florida	18	1-4/.250	1-2/.500	0-0/.000	0-0-0	4-0	2	0	0	3		3/5.3
C. Car	11	3-4/.750	0-1/.000	0-2/.000	2-0-2	0-0	1	0	0	0		6/5.5
RMU	14	3-4/.750	0-1/.000	0-2/.000	1-0-1	1-0	3	0	0	0		6/5.6
La. Col	18	3-5/.600	0-0/.000	2-2/1.000	0-1-1	2-0	2	0	0	4		8/6.0
NSU	14	1-6/.167	0-1/.000	0-0/.000	0-0-0	1-0	1	1	0	0		2/5.4
N.M.	18	2-4/.500	1-2/.500	0-0/.000	2-1-3	0-0	1	1	0	0		5/5.4
CE BAP	11	0-3/.000	0-1/.000	0-0/.000	0-3-3	2-0	0	1	0	0		0/4.8
LSU-A	12	2-3/.667	1-1/1.000	0-0/.000	0-0-0	2-0	1	1	0	0		5/4.8
Samford	13	0-2/.000	0-1/.000	0-0/.000	0-1-1	2-0	1	0	1	0		0/4.5
Ga. St.	14	2-5/.400	1-3/.333	2-2/1.000	0-1-1	0-0	1	0	0	0		7/4.6
Ark. St.	*	22	2-5/.400	0-2/.000	0-0/.000	0-2-2	1-0	0	1	0	1	4/4.5
UTA	*	28	4-9/.444	3-8/.375	0-1/.000	0-4-4	5-1	2	1	0	0	11/5.0
TXST	*	29	1-7/.143	1-6/.167	0-0/.000	0-1-1	2-0	1	1	0	0	3/4.9
Troy	*	21	2-7/.286	0-2/.000	2-2/1.000	1-2-3	1-0	2	0	1	0	6/4.9
UALR	*	18	0-4/.000	0-2/.000	0-2/.000	0-0-0	2-0	0	1	0	1	0/4.6
UL-L	*	14	2-9/.222	0-3/.000	2-2/1.000	1-3-4	0-0	0	2	0	1	6/4.7
UTA	*	20	2-3/.667	1-2/.500	0-0/.000	0-3-3	2-0	2	1	0	1	5/4.7
Ga. So.												
Troy												
USA												
UALR												
Ga. So.												
UL-L												
App. St.												
Ark. St.												
USA												
App. St.												
Ga. St.												
TXST												
TBA												
Totals	7	326	35-95/.368	12-46/.261	8-15/.533	8-23-31	30-1	23	12	4	14	90/4.7

2014-15 (JUNIOR)

Earned seven consecutive starts including at UT Arlington where he netted 11 points after a trio of three-pointers... ULM is 6-1 with him starting... became the first Warhawk to register four steals in a game on the season in the win over Louisiana College... shot 3-for-4 from the field in both games of the Battle 4 Atlantis Mainland bracket against Coastal Carolina and Robert Morris... registered a career-high 13 points and hit a trio of three-pointers in 24 minutes in a win over Champion Baptist

PREVIOUS SCHOOL

Played two seasons at East Mississippi CC and led the team to the Region 23 championship... guided the team to a No. 11 ranking in the NJCAA National Poll... averaged 7.1 points, 4.0 rebounds and 1.0 steals per game... hit a career-high six three-pointers in a game

HIGH SCHOOL

Lettered in both basketball and track & field at West Bolivar HS... named Co-MVP All-State and Best Offensive Player... earned All-Area MVP, First-Team and Best Defensive Player... guided the Eagles to the state championship... averaged 15 points, six rebounds, three steals and two blocks per game... dunked on Johnny O'Bryant III, who was drafted by the Milwaukee Bucks, his freshman year off a put-back



ULM Warhawks Men's Basketball

University of Louisiana at Monroe



5 Jamaal Samuel

Junior | Forward | 6-9 | 205
New Orleans, La. | Illinois State

	Season-High	Career-High
Pts	18, vs. CHBC (11/17/14)	18, vs. CHBC (11/17/14)
FG	7, vs. CHBC (11/17/14)	7, vs. CHBC (11/17/14)
3FG	3, two times	3, two times
FT	4, vs. NSU (12/9/14)	4, vs. NSU (12/9/14)
Ast	2, two times	2, three times
Reb	7, vs. NSU (12/9/14)	8, vs. Bradley (2/15/14)
Blocks	4, vs. C. Carolina (11/26/14)	4, two times
Steals	2, two times	2, two times
Min	27, at UNM (12/13/14)	27, at UNM (12/13/14)

Opp	GS	Min	FG-FGA/Pct.	3FG-FGA	FT-FTA/PCT	O-D-T	PF-FO	A	TO	Blk	Stl	Pts/Avg
UAB	17	1-4/.250	1-3/.333	0-0/.000	0-2-2	3-0	2	2	0	1	3/3.0	
CH BAP	20	7-12/.583	3-6/.500	1-2/.500	1-5-6	1-0	0	2	2	0	18/10.5	
Florida	22	3-10/.300	3-10/.300	0-0/.000	1-5-6	3-0	0	1	0	1	9/10.0	
C. Car	23	1-4/.250	1-4/.250	0-0/.000	0-2-2	2-0	1	1	4	1	3/8.3	
RMU	14	1-5/.200	1-4/.250	1-2/.500	0-5-5	2-0	1	4	0	1	4/7.4	
La. Col	11	1-6/.167	0-1/.000	0-0/.000	2-0-2	2-0	0	0	1	0	2/6.5	
NSU	14	4-8/.500	0-0/.000	4-5/.800	3-4-7	3-0	0	0	3	0	12/7.3	
N.M.	27	2-7/.286	0-4/.000	2-2/1.000	0-2-2	0-0	0	0	0	2	6/7.1	
CE BAP	* 21	1-5/.200	0-1/.000	1-2/.500	0-2-2	2-0	0	2	2	2	3/6.7	
LSU-A	21	4-6/.667	0-2/.000	0-0/.000	2-3-5	1-0	1	2	1	0	8/6.8	
Samford	25	5-8/.625	2-2/1.000	1-2/.500	0-6-6	4-0	0	1	1	0	13/7.4	
Ga. St.	* 26	4-12/.333	1-4/.250	0-1/.000	0-5-5	0-0	2	1	0	0	9/7.5	
Ark. St.	13	2-7/.286	1-4/.250	0-0/.000	0-0-0	0-0	0	0	1	0	5/7.3	
UTA	12	1-8/.125	1-5/.200	0-0/.000	0-4-4	0-0	0	0	0	0	3/7.0	
TXST	6	1-3/.333	0-2/.000	0-0/.000	0-1-1	2-0	0	1	0	0	2/6.7	
Troy	12	2-4/.500	0-2/.000	0-0/.000	2-3-5	3-0	0	1	0	0	4/6.5	
UALR	7	0-1/.000	0-1/.000	0-0/.000	0-2-2	1-0	0	1	0	0	0/6.1	
UL-L	18	3-5/.600	3-4/.750	0-0/.000	0-0-0	2-0	0	1	0	1	9/6.3	
UTA	13	0-3/.000	0-2/.000	0-0/.000	0-3-3	0-0	0	1	2	0	0/5.9	
Ga. So.												
Troy												
USA												
UALR												
Ga. So.												
UL-L												
App. St.												
Ark. St.												
USA												
App. St.												
Ga. St.												
TXST												
TBA												
Totals	2	322	43-118/.364	17-61/.279	10-16/.625	11-54-.65	31-0	7	21	17	9	113/5.9

2014-15 (JUNIOR)

Hit a trio of long-range shots at UL-Lafayette... netted 13 points including a pair of three-pointers and pulled down six rebounds against Samford... registered 12 points and grabbed a season-high seven rebounds in the win over NSU... set career highs in points (18), field goals made (7) and three-pointers made (3) in a win over Champion Baptist... earned the start against Central Baptist and had a pair of blocks and steals... led the team with nine points at Georgia State

2013-14 (SOPHOMORE) ILLINOIS STATE

Played in 26 games with one start... ranked second on the team and No. 5 in the Missouri Valley Conference with 0.9 blocks per game... netted four points with four rebounds and three blocks in the loss at Southern Illinois (March 1)... grabbed a career-best eight rebounds and scored four points in the win over Bradley (Feb. 15)... blocked a career-best four shots and collected six rebounds in the overtime loss at Evansville (Feb. 12)... netted nine points on 3-for-4 shooting in the loss at Loyola (Feb. 9)... scored a career-high 10 points on a career-best five field goals (5-for-5) in the win over Northern Iowa (Feb. 5)... made his first-career start and scored four points during a career-high 24 minutes in the win over Drake (Feb. 1)... registered the first two blocks of his career in the win over Chicago State (Dec. 4)... scored nine points on 4-for-6 shooting with five rebounds in the loss at No. 14 VCU (Nov. 8)

2012-13 (FRESHMAN) PRIOR TO ILLINOIS STATE

Helped guide South Plains College to a 22-8 overall record and an 11-5 mark in the Western Junior College Athletic Conference (WJCCAC) as a freshman in 2012-13... shot 46.7 percent from the field



11 Nick Coppola

Sophomore | Guard | 5-11 | 195
Richmond, Va. | Benedictine Prep

	Season-High	Career-High
Pts	Two times	16, at GSU (2/20/14)
FG	6, three times	6, four times
3FG	3, three times	4, at GSU (2/20/14)
FT	4, at UNM (12/13/14)	5, at KU (11/8/13)
Ast	12, vs. LC (12/6/14)	12, vs. LC (12/6/14)
Reb	5, vs. NSU (12/9/14)	6, vs. WKU (1/23/14)
Blocks	N/A	N/A
Steals	3, vs. LC (12/6/14)	3, vs. LC (12/6/14)
Min	45, at Florida (11/21/14)	45, at Florida (11/21/14)

Opp	GS	Min	FG-FGA/Pct.	3FG-FGA	FT-FTA/PCT	O-D-T	PF-FO	A	TO	Blk	Stl	Pts/Avg
UAB	*	33	5-8/.625	3-5/.600	1-2/.500	0-4-4	0-0	6	2	0	1	14/14.0
CH BAP	*	12	2-2/1.000	1-1/1.000	2-4/.500	0-2-2	1-0	4	0	0	1	7/10.5
Florida	*	45	3-10/.300	3-5/.600	2-2/1.000	0-1-1	3-0	2	1	0	1	11/10.7
C. Car	*	37	2-9/.222	1-5/.200	0-0/.000	0-1-1	2-0	7	0	0	0	5/9.3
RMU	*	39	2-8/.250	2-6/.333	0-0/.000	1-2-3	2-0	2	2	0	1	6/8.6
La. Col	*	31	6-9/.667	0-2/.000	0-2/.000	0-0-0	1-0	12	4	0	3	12/9.2
NSU	*	40	4-9/.444	2-5/.400	3-4/.750	1-4-5	3-0	6	2	0	2	13/9.7
N.M.	*	29	2-8/.250	1-4/.250	4-4/1.000	0-2-2	5-1	0	1	0	0	9/9.6
CE BAP	*	28	4-5/.800	2-3/.667	2-2/1.000	0-1-1	3-0	2	2	0	2	12/9.9
LSU-A	*	40	5-11/.455	1-4/.250	2-3/.667	0-3-3	1-0	6	1	0	0	13/10.2
Samford	*	37	6-12/.500	3-4/.750	0-0/.000	1-1-2	2-0	2	3	0	0	15/10.6
Ga. St.	*	29	2-4/.500	2-3/.667	0-0/.000	0-4-4	1-0	4	1	0	2	6/10.3
Ark. St.	*	40	1-5/.200	0-1/.000	1-2/.500	0-4-4	2-0	6	1	0	0	3/9.7
UTA	*	42	2-9/.222	0-5/.000	2-5/.400	0-2-2	2-0	7	3	0	1	6/9.4
TXST	*	34	1-5/.200	1-3/.333	0-0/.000	0-4-4	2-0	4	5	0	0	3/9.0
Troy	*	33	1-5/.200	1-4/.250	0-0/.000	0-2-2	1-0	2	3	0	0	3/8.6
UALR	*	40	6-11/.545	1-4/.250	2-2/1.000	0-2-2	0-0	5	2	0	2	15/9.0
UL-L	*	35	3-9/.333	1-4/.250	0-0/.000	0-4-4	1-0	1	1	0	1	7/8.9
UTA	*	34	2-6/.333	1-4/.250	0-0/.000	0-2-2	3-0	3	3	0	2	5/8.7
Ga. So.												
Troy												
USA												
UALR												
Ga. So.												
UL-L												
App. St.												
Ark. St.												
USA												
App. St.												
Ga. St.												
TXST												
TBA												
Totals	19	658	59-145/.407	26-72/.361	21-32/.656	3-45-.48	35-1	80	37	0	19	165/8.7

2013-14 College Sports Madness SBC Freshman of the Year

2014-15 (SOPHOMORE)

Has started at point guard in every game of his career... matched a season-high and led the team with 15 points against UALR at home... set his season-high with 15 points at Samford... recorded 13 points vs. LSU... tallied career-highs of 12 assists and three steals against Louisiana College and also had a double-double with 12 points... posted 12 points on four-for-five shooting against Central Baptist... registered 13 points in 40 minutes against NSU... dished out seven assists against Coastal Carolina at the Battle 4 Atlantis... netted 11 points on a trio of three-pointers, including one in the final seconds of regulation to send the game to overtime against No. 8 Florida, and played a career-high 45 minutes... registered 14 points, including a trio of three-pointers in the second half, to go along with his six assists in a win at UAB... led the team with nine points at New Mexico

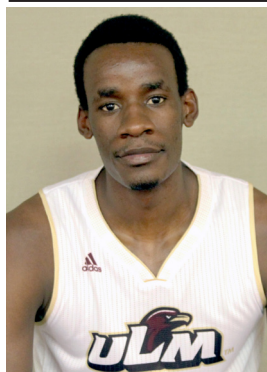
2013-14 (FRESHMAN)

One of two players to start all 27 games for the Warhawks... led the team in minutes with 33.3 per game... played 40 minutes nine times and tied the school record of five in a row set in 1999-2000 by Maurice Bell... in conference play, ranked third in the league in minutes (36.1 mpg), seventh in three-point field goal percentage (.407) and top-10 in assists (2.9 apg)... tallied nine double-figure scoring games including a career-high 16 points at Georgia State where he hit four three-pointers... drained a career-high six field goals at UALR in the regular season finale and scored 15 points... dished out a career-high eight assists in an overtime victory at Northwestern State... pulled down a career-high six rebounds at home versus WKU... scored 10 points in the season opener at No. 5 Kansas... led the team in minutes in 12 games and assists in 10 games... averaged 6.9 points and 3.3 assists per game on the year



ULM Warhawks Men's Basketball

University of Louisiana at Monroe



12 Tylor Ongwae

Senior | Forward | 6-7 | 205
Eldoret, Kenya | Ranger College

	Season-High	Career-High
Pts	25, vs. two times	27, two times
FG	10, two times	11, vs. ULL (1/4/14)
3FG	1, four times	4, at UTA (1/9/14)
FT	9, at TXST (1/10/15)	9, three times
Ast	9, vs. NSU (12/9/14)	9, vs. NSU (12/9/14)
Reb	10, vs. NSU (12/9/14)	11, two times
Blocks	2, two times	3, vs. ULL (1/4/14)
Steals	2, two times	5, vs. UALR (2/15/14)
Min	40, vs. UALR (1/17/15)	46, vs. ULL (1/4/14)



13 Major Deng

Junior | Forward | 6-10 | 190
Adelaide, Australia | Indian Hills CC

	Season-High	Career-High
Pts	16, vs. Troy (1/15/15)	16, vs. Troy (1/15/15)
FG	6, at UTA (1/8/15)	6, at UTA (1/8/15)
3FG	3, at UTA (1/8/15)	3, at UTA (1/8/15)
FT	6, vs. Troy (1/15/15)	6, vs. Troy (1/15/15)
Ast	3, vs. UTA (1/22/15)	3, vs. UTA (1/22/15)
Reb	15, vs. UALR (1/17/15)	15, vs. UALR (1/17/15)
Blocks	4, at UAB (11/15/14)	4, at UAB (11/15/14)
Steals	2, three times	2, three times
Min	35, two times	35, two times

Opp	GS	Min	FG-FGA/Pct.	3FG-FGA	FT-FTA/PCT	O-D-T	PF-FO	A	TO	Blk	Stl	Pts/Avg
UAB	*	34	8-17/.471	0-0/.000	2-2/1.000	3-6-9	5-1	2	3	0	1	18/18.0
CH BAP	*	12	8-10/.800	0-0/.000	0-0/.000	4-1-5	0-0	0	0	1	2	16/17.0
Florida	*	39	8-14/.585	0-1/.000	3-6/.625	3-5-8	4-0	3	3	2	0	19/17.7
C. Car	*	28	3-10/.300	0-3/.000	1-1/1.000	0-4-4	1-0	2	3	0	0	7/15.0
RMU	*	32	2-6/.333	0-0/.000	3-3/1.000	3-1-4	3-0	1	2	1	1	7/13.4
La. Col	*	30	9-15/.600	0-0/.000	4-5/.800	6-3-9	2-0	1	3	0	1	22/14.8
NSU	*	39	6-8/.750	0-0/.000	7-8/.875	2-8-10	3-0	9	4	0	0	19/15.4
N.M.	*	30	2-11/.182	1-3/.333	3-4/.750	2-5-7	3-0	1	2	0	0	8/14.5
CE BAP	*	38	10-16/.625	1-3/.333	4-4/1.000	2-3-5	2-0	6	1	0	1	25/15.7
LSU-A	*	38	9-15/.600	1-2/.500	6-6/1.000	2-4-6	3-0	4	2	0	1	25/16.6
Samford	*	39	2-14/.143	0-1/.000	5-6/.833	3-3-6	2-0	4	2	0	0	9/15.9
Ga. St.	*	22	0-7/.000	0-0/.000	0-0/.000	0-0-0	3-0	2	1	0	1	0/14.6
Ark. St.	*	36	4-7/.571	0-0/.000	2-2/1.000	1-6-7	0-0	1	3	2	1	10/14.2
UTA	*	29	2-7/.286	0-1/.000	3-3/1.000	2-4-6	5-1	5	1	0	1	7/13.7
TXST	*	35	4-10/.400	0-0/.000	9-9/1.000	3-5-8	1-0	2	1	1	2	17/13.9
Troy	*	35	7-15/.467	1-5/.200	0-1/.000	5-5-10	1-0	1	1	1	0	15/14.0
UALR	*	40	4-11/.364	0-2/.000	5-5/1.000	3-6-9	3-0	3	1	1	0	13/13.9
UL-L	*	34	5-11/.455	0-0/.000	3-5/.600	1-4-5	1-0	2	1	0	2	13/13.9
UTA	*	37	4-14/.286	1-4/.250	0-0/.000	2-6-8	4-0	2	4	0	1	9/13.6
Ga. So.												
Troy												
USA												
UALR												
Ga. So.												
UL-L												
App. St.												
Ark. St.												
USA												
App. St.												
Ga. St.												
TXST												
TBA												
Totals	19	627	97-218/.445	5-27/.185	60-70/.857	47-79-126	46-2	51	38	9	15	259/13.6

Opp	GS	Min	FG-FGA/Pct.	3FG-FGA	FT-FTA/PCT	O-D-T	PF-FO	A	TO	Blk	Stl	Pts/Avg
UAB	*	25	5-9/.556	2-4/.500	1-2/.500	1-4-5	1-0	2	0	4	2	13/13.0
CH BAP	*	20	2-4/.500	0-2/.000	3-3/1.000	0-6-6	2-0	2	2	2	1	7/10.0
Florida	*	35	1-7/.143	1-5/.200	0-0/.000	1-8-9	2-0	1	1	0	0	3/7.7
C. Car	*	35	5-10/.500	2-6/.333	2-2/1.000	1-9-10	2-0	0	0	3	0	14/9.3
RMU	*	19	0-4/.000	0-2/.000	2-2/1.000	1-0-1	3-0	0	2	0	0	2/7.8
La. Col	*	29	5-9/.556	1-2/.500	3-6/.500	2-9-11	2-0	2	2	2	1	14/8.8
NSU	*	26	5-10/.500	1-1/1.000	3-4/.750	3-4-7	1-0	1	1	2	0	14/9.6
N.M.	*	26	3-8/.375	0-4/.000	0-0/.000	2-4-6	4-0	1	0	1	2	6/9.1
CE BAP	*	34	3-7/.429	0-0/.000	5-6/.833	4-7-11	2-0	2	3	3	1	11/9.3
LSU-A	*	21	1-2/.500	0-0/.000	0-0/.000	1-6-7	0-0	0	1	3	0	2/8.6
Samford	*	16	0-4/.000	0-1/.000	0-0/.000	0-3-3	1-0	0	0	1	0	0/7.8
Ga. St.	*	17	3-9/.333	0-2/.000	0-1/.000	4-4-8	1-0	1	1	1	0	6/7.7
Ark. St.	*	20	4-7/.571	0-2/.000	2-3/.667	1-5-6	4-0	2	3	0	1	10/7.8
UTA	*	34	6-9/.667	3-6/.500	0-0/.000	3-2-5	1-0	2	3	2	0	15/8.4
TXST	*	34	2-4/.500	2-4/.500	1-2/.500	2-6-8	2-0	2	2	3	2	7/8.3
Troy	*	28	4-10/.400	2-5/.400	6-6/1.000	1-5-6	0-0	2	0	1	1	16/8.8
UALR	*	34	4-6/.667	2-3/.667	4-8/.500	4-11-15	4-0	2	2	1	0	14/9.1
UL-L	*	28	3-7/.429	1-3/.333	1-2/.500	0-5-5	2-0	1	2	1	0	8/9.0
UTA	*	34	4-8/.500	2-5/.400	0-0/.000	0-2-2	1-0	3	1	2	1	10/9.1
Ga. So.												
Troy												
USA												
UALR												
Ga. So.												
UL-L												
App. St.												
Ark. St.												
USA												
App. St.												
Ga. St.												
TXST												
TBA												
Totals	18	515	60-134/.448	19-57/.333	33-47/.702	31-100-131	35-0	26	26	32	12	172/9.1

2013-14 All-Conference Third-Team | 2013-14 NABC All-District Second-Team

2013-14 All-Louisiana Third-Team | 2013-14 College Sports Madness SBC Fourth-Team

2014-15 (SENIOR)

Team-high 13 points at UL-Lafayette... recorded 13 points and nine rebounds in 40 minutes vs. UALR at home... registered a double-double with 15 points and 10 rebs vs. Troy... scored 17 points on a perfect 9-9 FTs at Texas State... season-high 25 points vs. Central Baptist and also had six assists and five rebounds... matched his season-high with 25 points against LSU-A... tallied a double-double with 19 points and 10 rebounds vs. NSU and neared a triple-double with a career-high nine assists... neared a double-double with 22 points and nine rebounds vs. Louisiana College... poured in 19 points and grabbed eight rebounds in an overtime thriller against No. 8 Florida and head coach Billy Donovan said he was the best player on the court... won SBC Player of the Week, College Sports Madness SBC Player of the Week and Warhawk of the Week on Nov. 18, 2014... drained 16 points in just 12 minutes on 8-for-10 shooting against Champion Baptist and grabbed five rebounds... netted 18 points in a victory over UAB and neared a double-double with nine rebounds

2013-14 (JUNIOR)

Became just the second ULM student-athlete in school history to earn All-Conference honors from the Sun Belt since joining the league in 2006-0... finished fourth in the league in scoring with 17.5 points per game and reached double-figures in 17 of 18 SBC contests... recorded double-digits in 24 of 27 games on the season and played at least 40 minutes three times... registered at least 20 points nine times... posted three double-doubles, with a career-high 27 points against both UL-L and Georgia State at home... led the team in scoring in 17 games... notched a career-high five steals at home vs. UALR, the most by a Warhawk in a single game on the season... played a career-high 46 minutes in the overtime win over UL-L and made a career-high 11 FG's... etched a team-high 20 points against UTA at the SBC Championships... one of two players to start all 27 games on the season... second on the team in rebounds (5.8 rpg), three-pointers made (27), blocks (19) and steals (30)... named to the NABC Honors Court for outstanding achievement in the classroom

JUNIOR (2014-15)

Grabbed a career-high 15 points to go along with his 14 points and a double-double against UALR at home... netted career-highs of 16 points and six free throws (6-6) vs. Troy... tallied 15 points on 6-9 shooting including a trio of three-pointers in an overtime win over UT Arlington... posted a double-double with 11 points and 11 rebounds in the win over Central Baptist... recorded 14 points, seven rebounds and two blocks and hit a big three-pointer in the end to defeat Northwestern State... tallied a double-double with 14 points and 11 rebounds in the win over Louisiana College... registered a double-double with 14 points and 10 rebounds against Coastal Carolina in the Battle 4 Atlantis... poured in 13 points, including a pair of three-pointers, in a win over UAB and also blocked four shots

PREVIOUS SCHOOL

Led Indian Hills Community College to the 2014 Regional and District Championships... guided the program to a 34-3 record in 2014 and a combined 60-7 record in his two years... hit a three-pointer against Southeastern for the win in double overtime in 2013... netted a career-high 16 points against John Wood CC



ULM Warhawks Men's Basketball

University of Louisiana at Monroe



20 Chinedu Amajoyi

Senior Guard | 6-3 | 195
Rancho Cucamonga, Calif. | Kilgore College

	Season-High	Career-High
Pts	8, vs. CHBC (11/17/14)	12, vs. USA (2/27/14)
FG	4, vs. CHBC (11/17/14)	4, vs. USA (2/27/14)
3FG	N/A	3, two times
FT	2, at GSU (12/30/14)	10, vs. ASU (1/30/14)
Ast	6, vs. CHBC (11/17/14)	6, vs. CHBC (11/17/14)
Reb	4, at UAB (11/15/14)	8, two times
Blocks	N/A	1, two times
Steals	1, at GSU (12/30/14)	2, two times
Min	19, two times	36, at ASU (3/6/14)

Opp	GS	Min	FG-FGA/Pct.	3FG-FGA	FT-FTA/PCT	O-D-T	PF-FO	A	TO	Blk	Stl	Pts/Avg
UAB	8	0-3/.000	0-1/.000	0-0/.000	1-3-4	1-0	1	2	0	0	0	0/0.0
CH BAP	19	4-7/.571	0-2/.000	0-0/.000	0-2-2	3-0	6	0	0	0	0	8/4.0
Florida					DNP							
C. Car	3	0-0/.000	0-0/.000	0-0/.000	0-0-0	0-0	0	1	0	0	0	0/2.7
RMU	1	0-0/.000	0-0/.000	0-0/.000	0-0-0	0-0	0	0	0	0	0	0/2.0
La. Col	10	0-1/.000	0-1/.000	0-0/.000	0-0-0	1-0	1	2	0	0	0	0/1.6
NSU					DNP							
N.M.	8	0-1/.000	0-0/.000	0-0/.000	0-1-1	0-0	1	1	0	0	0	0/1.3
CE BAP	2	0-2/.000	0-1/.000	0-0/.000	0-0-0	1-0	0	0	0	0	0	0/1.1
LSU-A					DNP							
Samford	13	0-1/.000	0-0/.000	0-0/.000	0-1-1	1-0	0	0	0	0	0	0/1.0
Ga. St. *	19	0-0/.000	0-0/.000	2-2/1.000	0-0-0	0-0	1	1	0	1	2	2/1.1
Ark. St.					DNP							
UTA	4	0-1/.000	0-1/.000	0-0/.000	0-0-0	0-0	0	0	0	0	0	0/1.0
TXST					DNP							
Troy					DNP							
UALR					DNP							
UL-L	3	0-0/.000	0-0/.000	0-0/.000	0-0-0	0-0	1	0	0	0	0	0/0.9
UTA					DNP							
Ga. So.												
Troy												
USA												
UALR												
Ga. So.												
UL-L												
App. St.												
Ark. St.												
USA												
App. St.												
Ga. St.												
TXST												
TBA												
Totals	1	90	4-16/.250	0-6/.000	2-2/1.000	1-7-8	7-0	11	7	0	1	10/0.9

2014-15 (SENIOR)

Scored eight points in 19 minutes in a win over Champion Baptist

2013-14 (JUNIOR)

Finished top-10 in the league in three-point field goal percentage at .405 (15-37)... started in 11 of ULM's last 12 games and doubled his scoring average in that span... posted career-highs of 12 points and eight rebounds against South Alabama at home... became the only ULM student-athlete to hit 10 free throws in a game on the season as he went 10-12 at home against Arkansas State... registered three double-figure scoring games... played a career-high 36 minutes at Arkansas State and pulled down eight rebounds... drained a trio of three-pointers at both Texas State and Georgia State... averaged 4.1 points per game and made 22 appearances

PREVIOUS SCHOOL

Played two seasons at Kilgore College and led the Rangers to a 27-6 overall record and an East Texas JUCO Conference Championship ... Also guided Kilgore to the quarterfinals of the 2013 National Junior College Athletic Association National Tournament and started every game ... Averaged 5.9 points, 2.7 rebounds and 1.9 assists in 33 appearances ... Tallied five double-figure scoring games including a career-high 17 points on two separate occasions ... Shot .807 percent from the free-throw line

HIGH SCHOOL

An All-Conference honoree at Los Osos High School ... Averaged 15 points and seven rebounds per game while shooting .857 from the free throw line ... 1,000 point scorer in his career



22 Lance Richard

R-Freshman | Guard | 5-10 | 175
Monroe, La. | Sterlington HS

	Season-High	Career-High
Pts	8, vs. CHBC (11/17/14)	8, vs. CHBC (11/17/14)
FG	3, vs. CHBC (11/17/14)	3, vs. CHBC (11/17/14)
3FG	2, vs. CHBC (11/17/14)	2, vs. CHBC (11/17/14)
FT	N/A	N/A
Ast	N/A	N/A
Reb	3, vs. CHBC (11/17/14)	3, vs. CHBC (11/17/14)
Blocks	1, vs. RMU (11/17/14)	1, vs. RMU (11/17/14)
Steals	1, two times	1, two times
Min	15, vs. CHBC (11/17/14)	15, vs. CHBC (11/17/14)

Opp	GS	Min	FG-FGA/Pct.	3FG-FGA	FT-FTA/PCT	O-D-T	PF-FO	A	TO	Blk	Stl	Pts/Avg
UAB	1	0-0/.000	0-0/.000	0-0/.000	0-0-0	0-0	0	0	0	0	0	0/0.0
CH BAP	15	3-8/.375	2-7/.286	0-0/.000	0-3-3	1-0	0	1	0	1	8/4.0	
Florida	1	0-0/.000	0-0/.000	0-0/.000	0-0-0	0-0	0	0	0	0	0/2.7	
C. Car	1	0-2/.000	0-2/.000	0-0/.000	0-0-0	0-0	0	0	0	0	0/2.0	
RMU	5	1-2/.500	1-2/.500	0-0/.000	0-0-0	2-0	0	0	1	0	3/2.2	
La. Col	5	1-3/.333	1-3/.333	0-0/.000	0-0-0	0-0	0	0	0	0	3/2.3	
NSU					DNP							
N.M.	1	0-1/.000	0-1/.000	0-0/.000	0-0-0	0-0	0	0	0	0	0/2.0	
CE BAP	3	0-1/.000	0-1/.000	0-0/.000	0-0-0	0-0	0	0	0	1	0/1.8	
LSU-A	0+	0-1/.000	0-1/.000	0-0/.000	0-0-0	0-0	0	0	0	0	0/1.6	
Samford	2	0-0/.000	0-0/.000	0-0/.000	0-0-0	0-0	0	0	0	0	0/1.4	
Ga. St.	5	1-2/.500	1-2/.500	0-0/.000	0-0-0	0-0	0	1	0	0	3/1.5	
Ark. St.					DNP							
UTA	6	1-2/.500	1-2/.500	0-0/.000	0-1-1	1-0	0	0	0	0	3/1.7	
TXST					DNP							
Troy					DNP							
UALR					DNP							
UL-L					DNP							
UTA					DNP							
Ga. So.												
Troy												
USA												
UALR												
Ga. So.												
UL-L												
App. St.												
Ark. St.												
USA												
App. St.												
Ga. St.												
TXST												
TBA												
Totals	45	7-22/.318	6-21/.286	0-0/.000	0-4-4	4-0	0	2	1	2	20/1.7	

2014-15 (SOPHOMORE)

Netted a career-high eight points and hit a pair of three-pointers in a win over Champion Baptist... hit a three-pointer in an overtime win over UT Arlington... drilled a three-pointer and also rejected a shot against Robert Morris at the Battle 4 Atlantis

2013-14 (FRESHMAN)

Redshirted... will still have four years of eligibility remaining

HIGH SCHOOL

Played three seasons at Sterlington High School ... Guided the Panthers to a 25-8 record as a senior and a second round appearance in the Louisiana High School Athletic Association playoffs ... Averaged 12 points and 3 assists per game his senior year ... Earned All-District honors from 2010-2013



ULM Warhawks Men's Basketball

University of Louisiana at Monroe



32 Justin Roberson

Junior | Guard | 6-1 | 185
Natchitoches, La. | Western Texas

	Season-High	Career-High
Pts	19, vs. CEBC (12/16/14)	19, vs. CEBC (12/16/14)
FG	8, vs. CEBC (12/16/14)	8, vs. CEBC (12/16/14)
3FG	1, five times	1, five times
FT	8, vs. UALR (1/17/15)	8, vs. UALR (1/17/15)
Ast	6, vs. RMU (11/27/14)	6, vs. RMU (11/27/14)
Reb	7, two times	7, two times
Blocks	2, vs. RMU (11/27/14)	2, vs. RMU (11/27/14)
Steals	4, at TXST (1/10/15)	4, at TXST (1/10/15)
Min	32, two times	32, two times

Opp	GS	Min	FG-FGA/Pct.	3FG-FGA	FT-FTA/PCT	O-D-T	PF-FO	A	TO	Blk	Stl	Pts/Avg
UAB	*	32	6-11/.545	0-0/.000	6-6/1.000	1-3-4	1-0	5	1	0	2	18/18.0
CH BAP	*	15	4-5/.800	0-0/.000	1-2/.500	0-1-1	1-0	2	1	0	3	9/13.5
Florida	*	26	1-6/.167	0-1/.000	0-0/.000	0-1-1	5-1	0	3	0	2	2/9.7
C. Car	*	29	4-7/.571	1-3/.333	2-2/1.000	0-7-7	2-0	2	2	0	0	11/10.0
RMU	*	31	6-10/.600	0-2/.000	0-0/.000	0-4-4	3-0	6	3	2	0	12/10.4
La. Col	*	26	5-7/.714	0-1/.000	2-2/1.000	0-3-3	4-0	1	5	0	2	12/10.7
NSU	*	28	4-6/.667	0-1/.000	0-2/.000	0-3-3	4-0	2	3	0	1	8/10.3
N.M.	*	32	3-11/.273	0-1/.000	0-1/.000	0-4-4	0-0	1	2	0	2	6/9.8
CE BAP	*	31	8-12/.667	1-2/.500	2-2/1.000	0-4-4	2-0	4	0	0	2	19/10.8
LSU-A	*	30	2-6/.333	0-0/.000	2-3/.667	0-7-7	5-1	4	2	0	0	6/10.3
Samford	*	25	1-10/.100	1-1/1.000	0-0/.000	3-3-6	0-0	2	3	0	1	3/9.6
Ga. St.		13	0-5/.000	0-1/.000	0-1/.000	0-0-0	2-0	0	0	0	0	0/8.8
Ark. St.		19	4-7/.571	0-0/.000	2-3/.667	0-1-1	2-0	1	0	0	0	10/8.9
UTA		23	2-10/.200	1-3/.333	0-0/.000	1-5-6	5-1	1	1	0	0	5/8.6
TXST		17	5-9/.556	0-1/.000	0-0/.000	0-2-2	5-1	2	3	0	4	10/8.7
Troy		26	4-9/.444	1-1/1.000	0-0/.000	0-1-1	1-0	0	0	0	1	9/8.8
UALR		24	2-6/.333	0-3/.000	8-9/.889	0-3-3	1-0	1	3	0	0	12/8.9
UL-L		28	3-7/.429	0-0/.000	2-5/.400	1-5-6	3-0	4	1	1	1	8/8.9
UTA		27	2-10/.200	0-1/.000	3-4/.750	3-2-5	2-0	3	3	0	0	7/8.8
Ga. So.												
Troy												
USA												
UALR												
Ga. So.												
UL-L												
App. St.												
Ark. St.												
USA												
App. St.												
Ga. St.												
TXST												
TBA												
Totals	11	482	66-154/.429	5-22/.227	30-42/.714	9-59-68	48-4	41	36	3	21	167/8.8

JUNIOR (2014-15)

Put in 12 points and drained a career-high eight free throws (8-9) vs. UALR at home... scored 10 points against both Arkansas State and Texas State... career-high 19 points and eight made field goals in the win over Central Baptist... reached double-figures with 12 points on 5-7 shooting against Louisiana College... registered a team and game-high of 18 points, including a perfect 6-6 FT, to go along with his five assists in a win over UAB... recorded a career-high three steals against Champion Baptist... netted 11 points and grabbed a career-high seven rebounds against Coastal Carolina... drained 12 points with a career-high six assists and two blocks against Robert Morris

PREVIOUS SCHOOL

Led Western Texas Junior College to a 23-8 record and averaged 14.2 points, 3.5 rebounds, 4.0 assists and 2.0 steals per game... named to the All-Western Texas Conference First-Team... memorable dunk over a 6-8 post player after driving down the lane

HIGH SCHOOL

Lettered in both basketball and football at Natchitoches Central HS and earned All-State in both sports

Individual Career Totals for Returning Student-Athletes

Only includes statistics at ULM

Points

T. Ongwae	697
M. Williams	382
N. Coppola	351
D. Harvey	154
C. Amajoyi	101

Steals

T. Ongwae	45
N. Coppola	31
M. Williams	20
D. Harvey	17
C. Amajoyi	10

Field Goals M-A

T. Ongwae	249-579
M. Williams	157-296
N. Coppola	124-319
D. Harvey	61-110
C. Amajoyi	29-85

Free Throws M-A

T. Ongwae	178-210
M. Williams	66-107
N. Coppola	49-74
D. Harvey	29-50
C. Amajoyi	28-38

Rebounds

T. Ongwae	281
M. Williams	210
D. Harvey	153
N. Coppola	119
C. Amajoyi	75

Three-Pointers M-A

N. Coppola	52-146
T. Ongwae	32-127
C. Amajoyi	15-46
M. Williams	2-8

Assists

N. Coppola	168
T. Ongwae	90
D. Harvey	24
C. Amajoyi	23
M. Williams	17

Games/Starts

T. Ongwae	46/46
N. Coppola	46/46
D. Harvey	46/9
M. Williams	43/34
C. Amajoyi	33/15

Blocks

M. Williams	41
T. Ongwae	28
D. Harvey	21
C. Amajoyi	2

Minutes

N. Coppola	1557
T. Ongwae	1480
M. Williams	987
D. Harvey	662
C. Amajoyi	471

ULM's 2014-15 Record When it Has...

Five Double-Figure Scorers (2-0)

vs. Northwestern State
vs. UALR

Two Double-Figure Scorers (1-5)

at No. 8 Florida
vs. Coastal Carolina
vs. Robert Morris
at Samford
vs. Troy (win)
vs. UT Arlington

Four Double-Figure Scorers (5-0)

at UAB
vs. Champion Baptist
vs. Louisiana College
vs. Central Baptist
vs. Arkansas State

One Double-Figure Scorer (1-0)

at UL-Lafayette

Three Double-Figure Scorers (3-0)

vs. LSU-Alexandria
at UT Arlington
at Texas State

No Double-Figure Scorers (0-2)

at New Mexico
at Georgia State



ULM Warhawks Men's Basketball

University of Louisiana at Monroe

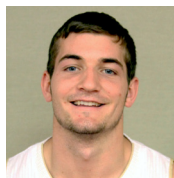


Media Roster



0 Marvin Williams

Senior | Center
6-8 | 245
Memphis, Tenn.
NW Florida State College



11 Nick Coppola

Sophomore | Guard
5-11 | 190
Richmond, Va.
Benedictine Prep



1 Alex Brown

Freshman | Guard
6-4 | 185
Vernon, Fla.
Vernon HS



12 Tylor Ongwae

Senior | Forward
6-7 | 205
Eldoret, Kenya
Ranger College



2 DeMondre Harvey

Sophomore | Forward
6-7 | 210
Minden, La.
Pearl River CC



13 Majok Deng

Junior | Forward
6-10 | 190
Adelaide, Australia
Indian Hills CC



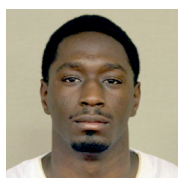
3 Prince Cooper

Sophomore | Guard
6-4 | 215
Freeport, Bahamas
Miami-Dade College



20 Chinedu Amajoyi

Senior | Guard
6-3 | 195
Rancho Cucamonga, Calif.
Kilgore College



4 Mack Foster

Junior | Guard
6-2 | 185
Beulah, Miss.
East Mississippi CC



22 Lance Richard

R-Freshman | Guard
5-10 | 170
Monroe, La.
Sterlington HS



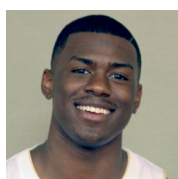
5 Jamaal Samuel

Junior | Forward
6-9 | 205
New Orleans, La.
Illinois State



32 Justin Roberson

Junior | Guard
6-1 | 185
Natchitoches, La.
Western Texas



10 Roderick Taylor

Freshman | Forward
6-8 | 210
Harker Heights, Texas
Harker Heights HS



Head Coach Keith Richard

ULM '82
Fifth Year at ULM
14th Year Overall
Baton Rouge, La.